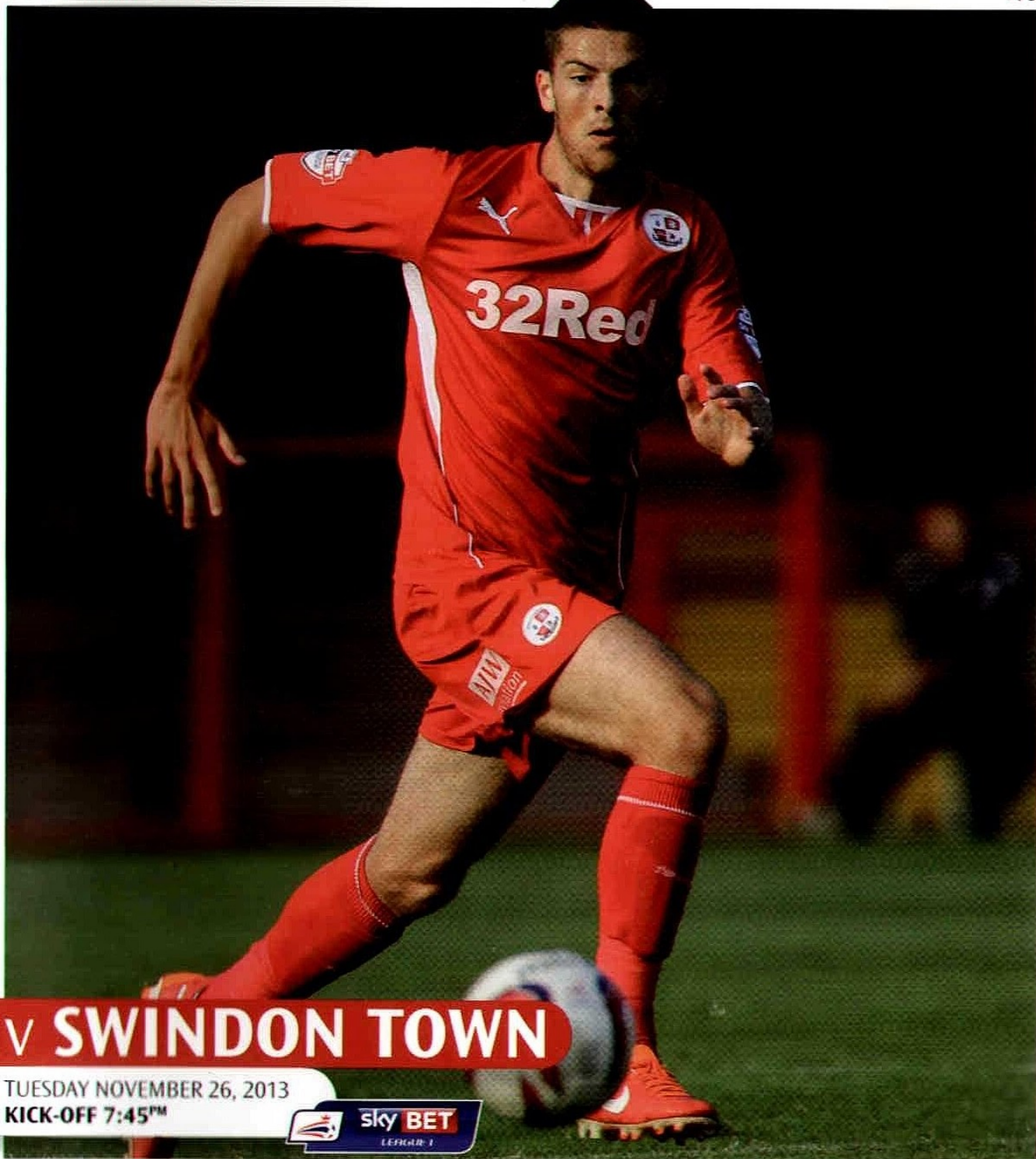




# REDS

OFFICIAL MATCH DAY PROGRAMME

£3



**v SWINDON TOWN**

TUESDAY NOVEMBER 26, 2013  
KICK-OFF 7:45PM



Main sponsor:



Stadium sponsor:



Match sponsor:



Ball sponsor:





# £32 FREE No deposit Bonus

*Don't hang about,  
this offer ends soon*

**Sign up today to get your free £32 to enjoy over  
500 great casino games**

[gambleaware.co.uk](http://gambleaware.co.uk)

**32Red.com**

Proud Sponsors of



# inside TODAY

- 4 Richie Barker
- 7 Josh Simpson
- 8 The Big Match
- 13 Swindon spotlight
- 30 Jamie Proctor
- 50 Way Back When
- 60 Results and Fixtures
- 61 The Final Word

**PLUS LOTS MORE!**

8

Walsall Action



19

The Ex-files



13

The Robins



30

Jamie Proctor

## CONTACT US

The Checktrade.com Stadium, Winfield Way, Crawley, West Sussex, RH11 9RX.

General enquiries:

feedback@ Crawleytownfc.com

Main switchboard: 01293 410000

## CLUB OFFICIALS

**President:** Les Turnbull

**Chairman:** Dave Pottinger

**Directors:** Ian Carter, Susan Carter,

Michael Dunford, Dave Pottinger

**Non-Executive director:** Matt Turner

**Chief Executive:** Michael Dunford

**Company Secretary:** Alan Foot ACIMA

**Club Secretary:** Chris Hough

**Commercial Manager:** Ewan Dunlop

**Supporter Liaison Manager:** Sue Benn

**Hospitality & Retail Manager:**

Amie Gibbins

**Accounts Manager:** Kelly Derham

**Media Manager:** Bruce Talbot

**Media Assistant:** Ben Blackmore

**Reception & Tickets:** Karen Snell,

Sophie Harding

**Ground Staff:** Matt Moss, Tom Martin

**Safety Officer:** Grant Ritchie

**Police Liaison Officer:** Sg/L. Darren Taylor

**Video production:** Alan Bourne

**Club Historian:** Tony Pope

**Club Chaplain:** Gary Simmonds

## VICE PRESIDENTS

David Brown, Jim Green, John Harris,

Fred Pitts, Audrey Turnbull, John Poulsum

## FOOTBALL MANAGEMENT

**Director of Football:** Steve Coppel

**Manager:** Richie Barker

**Assistant Manager:** Anthony Williams

**Physiotherapist:** James Barker

**Head of Medical and Sports Science:**

Niall Clark

**Performance Analyst:** Luke Dimery

**Chief Scout:** Martin Hinshelwood

**Club Doctor:** Dr Jerry Hill

**Kit Manager:** Marco Quasimodo

**Youth Team Manager:** Steve Martin

**Coach:** Mark Beard

**Physiotherapist:** Jayde Cook

**Football in the Community Officers:**

Simon Pearce, Sam Dowling

## THE REDS

**Editorial:** Bruce Talbot, Ben Blackmore,

Anthony Scott, Sam Goold-Knibbs,

Warren Lucy

**Design:** www.alisoncooper.com

**Print:** O Publishing

**Photography:** www.jamesboardman.com

PA Images

Good evening everyone and a warm welcome to Mark Cooper, his staff and players and the Swindon supporters here tonight.



# Richie BARKER

There has been a big change in personnel at Swindon since last season and Mark seems to be doing an excellent job there with a much-changed team. We know from past encounters how difficult an opponent they are but the onus is on us to build on Saturday's result against Walsall.

I had a feeling before the game that two teams who play in a fairly similar style might cancel each other out and it proved to be the case, although I think as 0-0s go it was a fairly entertaining 90 minutes. Although it was obviously disappointing for us to not to take one of the chances we created there were still plenty of positives, not least our first clean sheet in seven games. Although Paul Jones got man of the match, he didn't have a great deal to do while in front of him I thought we were organised and committed in our defensive play and cut out most of the silly errors which seem to have cost us in recent weeks.

I made some changes to the team, leaving out Josh Simpson our captain and bringing back Billy Clarke. I just felt Josh has looked a little jaded in recent games and when I told him of my decision he agreed. Of course, he wants to play in every game as they all do but sometimes it can do you good to come out of the firing line for a bit. The same applied to Kyle when we left him out after Bristol City and he came back in on Saturday and was more like his old self.

It was always a gamble playing Billy from the start because he has had so little game time in the last few weeks because of his injury. He still isn't 100% there in terms of match fitness but getting another 80 minutes under his belt on Saturday will do him the

world of good. I must mention Jamie Proctor's performance on Saturday. He worked really hard and caused a defence with the best away record in the league plenty of problems. He has certainly set himself a standard that he must now try to maintain on a consistent basis.

As you know, we have allowed Connor Essam to go to Dartford to get games under his belt. With such a busy schedule coming up around Christmas we need everyone to be available and match ready and Connor will certainly benefit from regular games for the next month at a club he knows well.

Unfortunately, Kyle Bennett has had to go back to Doncaster after his loan expired and Luke Rooney, whose loan from Swindon was due to expire on January 1, is back training with them. It's disappointing that it didn't work out for Luke here and after talking to him we decided the best course of action was for him to go back to his parent club and we wish him well for the future.

It's a busy week with a Sussex Senior Cup tie at Eastbourne United tomorrow night. Taff and Martin Hinshelwood will be running the side and some of the lads who haven't had much match time in recent weeks will get the opportunity to play along with some of the under-18s. It is a competition we take seriously because with no reserve team any extra games are invaluable in terms of keeping players on the fringes of the team ticking over. And it culminates in a final at the AMEX, which is not a bad incentive!

We are now unbeaten in three and while no one is under any illusions that we are playing as well as I know we can I see

definite signs of progress. The players recognise that there are areas of our performances which we still need to improve but I have to say their work ethic in training and their togetherness has been outstanding and we are all looking forward to putting in a performance they – and you – deserve tonight.

Finally, I would like to take this opportunity to remind all our fans that Sunday December 1 is World AIDS Day when people around the world remember those who have died from HIV and AIDS or who are living with the illness.

In many developing countries football is playing an important role in helping young people improve their awareness and education about HIV and how to protect themselves and their partners from infection.

Tonight, I am proud to wear the HIVsport 'Badge of Hope' and to support awareness of their campaign alongside the League Managers Association.

Thanks for your support tonight and please give the team vocal encouragement from start to finish!

#### BEST WISHES

## Richie

Sponsored by:

 **Mayo Wynne Baxter**  
Solicitors

# the little truck with a **BIG** payload and a **TINY** price

## Ryan Asset Management Limited

Ryan provide any make or model of car or van at a competitive price for either outright purchase or lease. They offers short term hire solutions from their own fleet of over 100 vehicles and MOT and service facilities with your vehicle collected and returned at your convenience.

Founded by its owners Keith and Alyson Murray, Ryan was created in 1998 and moved to Partridge Green in 2004. Their object was to provide a unique experience to its customers - "Good old fashioned common courtesy" coupled with over 30 years experience in the motor industry.

The difference between dealing with Ryan and other leasing companies is that you can talk to Keith in simple terms, no balance sheets, no bank statements, and get an honest solution that fit your particular requirements.

In January 2012 Ryan took on the franchise to supply DFSK Mini vans to its customers. This is the only Micro Van on the market with prices starting from £7,995 plus VAT and delivery. "It is a product that we felt filled a need in the market", says Keith. "Businesses want new vehicles to do a job of work without requiring them to take on huge debt commitments. The DFSK range does just that."

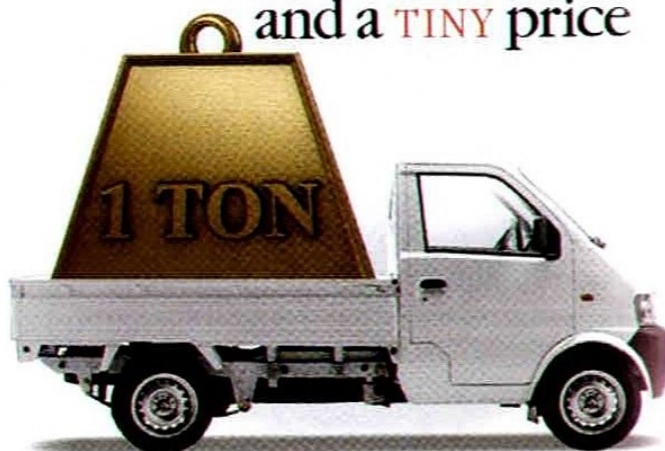
With a range of options such as Refrigerated Bodies, Cages or Boxes you can get the vehicle just as you need it.

The new vans have already proved very popular with customers and Keith and Alyson are waiting to welcome you to a different experience in buying vehicles.

For further information please call Keith on: 08704 104 110 or email: keith@ryanvehicles.com



Ryan Vehicle Centre  
Star Road, Partridge Green  
West Sussex RH11 6RA  
08704 104 110



£7,995 + VAT + Delivery  
or ask about a weekly lease

Loadhopper is a Brand New Chinese Import with a 45mpg 1300cc petrol engine  
Nationwide Spare Part Availability - 3 Year, 60,000 mile Warranty - Waxoiled and Undersealed  
Ryan Vehicles can fit a Special Body, Convert to LPG and Service - So you can Lease - Hire - or Buy Direct  
More information on the website: [www.ryanandfsk.co.uk](http://www.ryanandfsk.co.uk) or see for yourself at Partridge Green, RH11 6RA  
We will also Guarantee you Complete Peace of Mind - Any Problems Just Phone Keith



08704 104 110



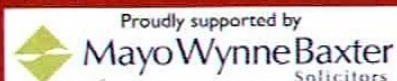
08704 104 110



*Wear a Santa  
Suit for the day  
and support  
Chestnut Tree House!*

**Friday 13th December 2013**

If you can't make this day  
just pick another of your choice



**ATTENTION!**

Wear your Santa suit at Crawley  
Town Football Club, for the  
game against Preston NE on  
Saturday 14th December 2013,  
and see how many Santas  
can fit in the stands!



We are looking for fun and festive people to help raise money for Chestnut  
Tree House, children's hospice, by spending the day dressed as Santa.  
Registration is just £10 per adult, which includes a Santa suit and fundraising pack.

**Register online at  
[www.chestnut-tree-house.org.uk](http://www.chestnut-tree-house.org.uk)**

**Tel: 01903 871821 Email: [corporate@chestnut-tree-house.org.uk](mailto:corporate@chestnut-tree-house.org.uk)**

Like our Chestnut Tree House Facebook page Follow us on Twitter @ChestnutSussex



**Chestnut  
Tree House**

{Children's  
Hospice Care}

Registered charity no. 264789

# red leader

# JOSH SIMPSON



**HELLO AGAIN TO ALL OUR SUPPORTERS AND THANKS FOR COMING OUT TONIGHT TO GET BEHIND YOUR TEAM.**

Considering Walsall's recent run, I thought Saturday's 0-0 draw was a good point and the boys put in a decent performance. We are both teams that are very similar in our formations and playing styles and I think we ended up cancelling each other out a bit. It was nice to see Billy back in the starting XI and his fitness will improve game by game. Hopefully we can start saying the same about his beard soon...

It was a milestone game for Matt Sadler who clocked up his 175th consecutive league start, a run of games stretching back to his debut for Stockport in January 2010 when he was on loan there. It's a massive achievement for any player and no one deserves it more than Sads who's definitely one of our most consistent performers, even if his Brummie banter isn't the best.

I haven't included a joke from our Head Physio James Barker recently, as he's been ill, but it didn't take long for the Michael McIntyre wannabe to crack a joke in the treatment room since he came back. This week he told me that as a romantic gesture for his girlfriend he made her a meal to celebrate her birthday and spelt her name out in alphabet spaghetti. He calls it his signature dish ....

I'm not sure how many of you were interested and watched the Froch versus Groves fight which took place on Saturday night but there has been a lot of speculation amongst the lads this week on who would win a boxing match between Nicky Adams and Jonte Smith.

After some unkind words by the pair of them, some banter and a lot of stirring up from the boys it can only be settled in one way..... an arm wrestle! Who will win? Tweet #ctfcJonte or #ctfcNicky to @JoshSimpson87 and I will let you know the outcome of this Bolton v Bermuda match-up in the next programme.

Tonight we take on Swindon Town who will be looking to go one better than their play-off semi final defeat last season. They have come into some good form since the appointment of Mark Cooper, who I had as my manager when I was at Peterborough, and they sit one point outside the play offs.

They will look to play good football like us, which should make for an entertaining game this evening.

What we really need is for you in the stands and behind the goal to create a noisy atmosphere because the boys will respond to that and hopefully we can come away with three points.

**COME ON YOU REDS!**

## Skip

# the big MATCH

## Crawley 0, Walsall 0

Reds are now unbeaten in three after a hard-fought goalless draw with an in-form Walsall side.

The visitors had the two best clear-cut opportunities early in the second half when Craig Westcarr hit the bar and then blazed over from eight yards but for long spells both sides cancelled each other out.

Similar in formation and their approach to the game, the teams tried to play the right way and there were moments, particularly in the second half, when Reds nearly breached the defence with the best away record in League One.

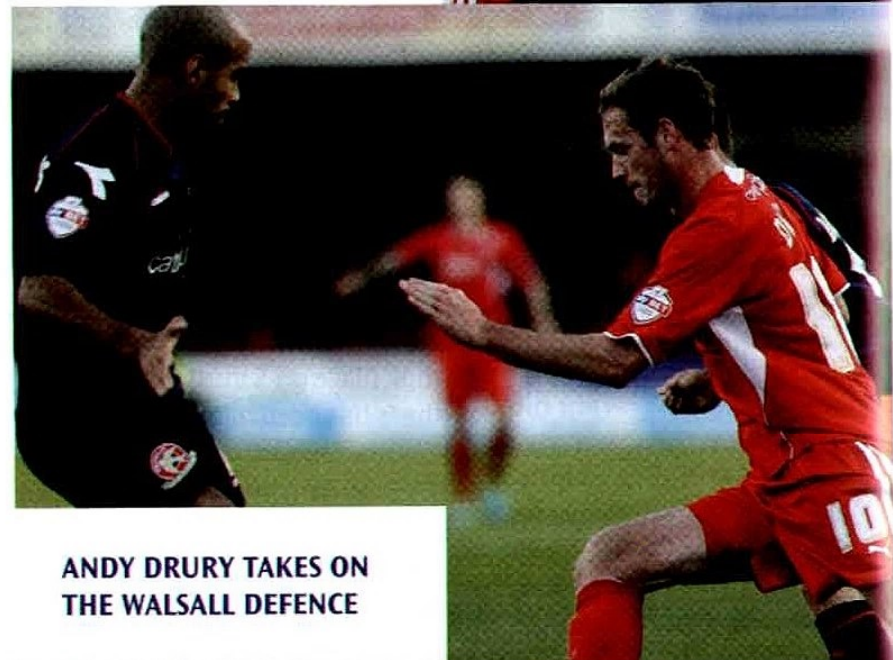
Andy Drury produced a fabulous cross for Jamie Proctor that he headed narrowly wide and then the midfielder's long pass put Billy Clarke in space. Billy took the shot on early and forced Richard O'Donnell to make a smart save.

In the closing stages Emile Sinclair and Gary Alexander came on and both had strikes on goal but it wasn't to be.

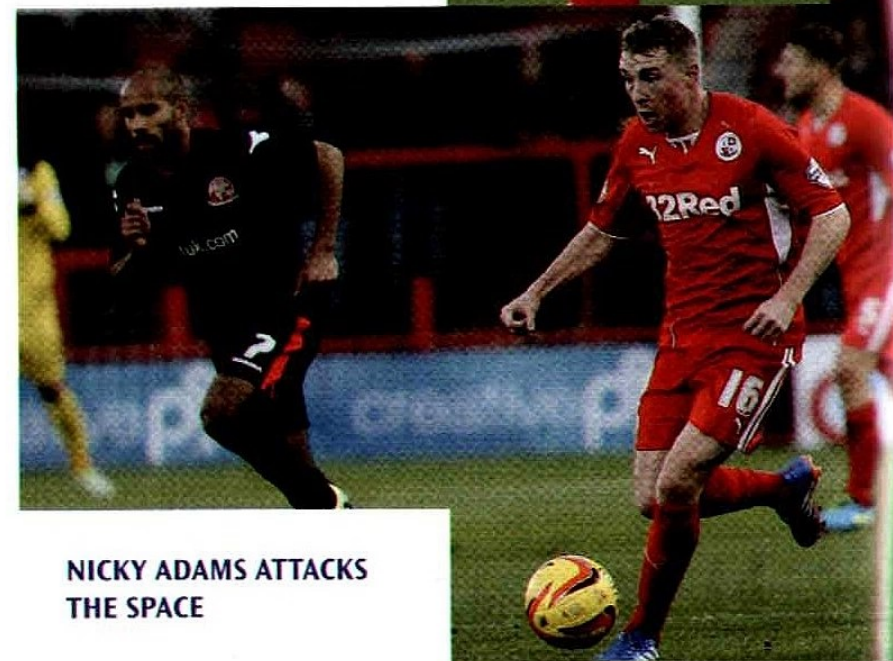
**Reds:** P.Jones, Hurst, Sadler, Connolly, McFadzean; Adams, Bulman, M.Jones, Drury; Clarke (Sinclair 80), Proctor (Alexander 79). Unused subs: Torres, Simpson, Walsh, Smith, Maddison.



**ANDY DRURY WINS HIS  
HEADER**



**ANDY DRURY TAKES ON  
THE WALSALL DEFENCE**



**NICKY ADAMS ATTACKS  
THE SPACE**

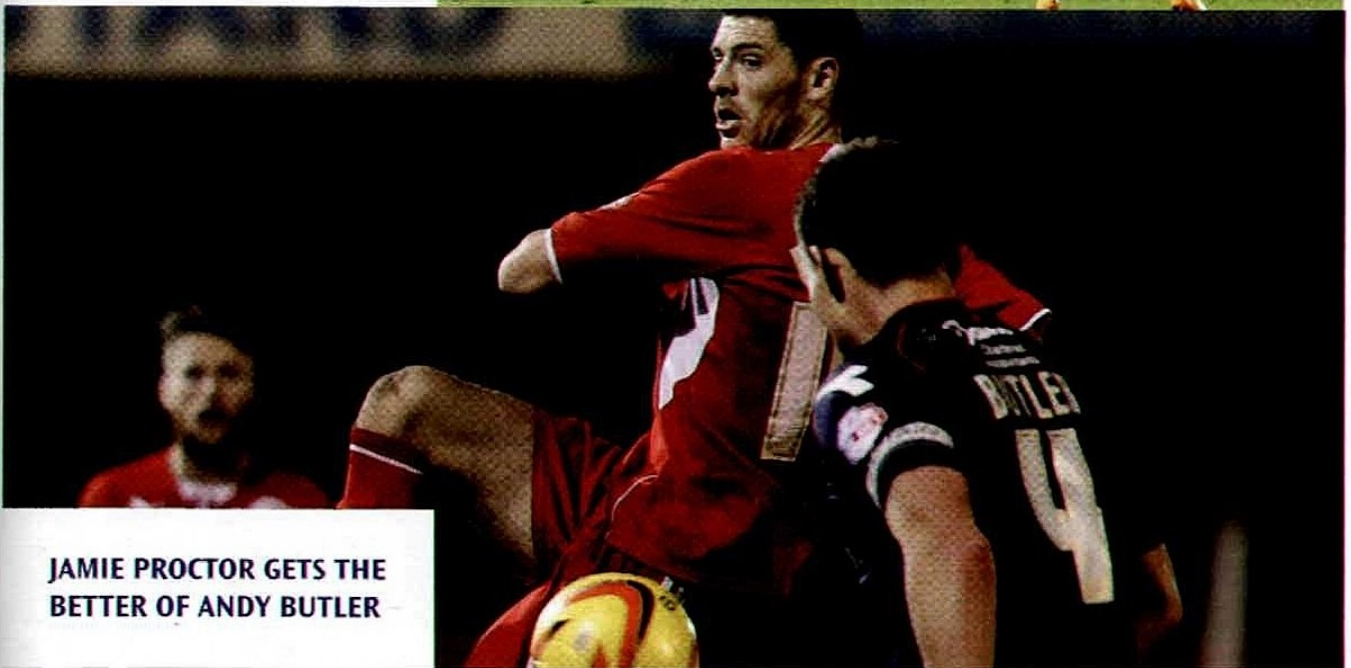




**NICKY ADAMS  
CHALLENGES ANDY  
TAYLOR**



**JAMES HURST HEADS  
CLEAR**



**JAMIE PROCTOR GETS THE  
BETTER OF ANDY BUTLER**



# £5 FREE BET EVERY WEEK

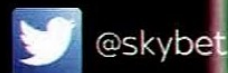
for all Sky Bet customers

Just place a £5 accumulator  
at odds of 5/1 or more to qualify each week

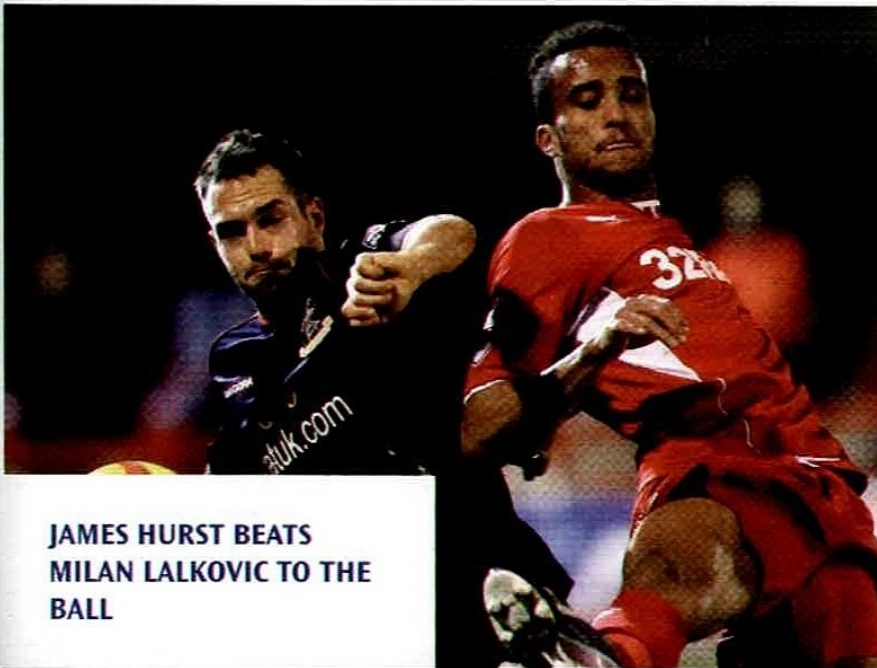


Go to [www.skybet.com/crawley](http://www.skybet.com/crawley)  
to join the Free Bet Club

18+ Terms and conditions apply. Gamble responsibly. For more info, visit [www.gambleaware.co.uk](http://www.gambleaware.co.uk)  
or for confidential advice and support call the GamCare Helpline on 0808 8020 133.



# Crawley 0, Walsall 0



**JAMES HURST BEATS  
MILAN LALKOVIC TO THE  
BALL**

## WHAT THE BOSS SAID

"I thought it was a decent game between two sides who try to play the right way. They set up quite similarly to us and there weren't too many chances at either end.

"For us it's another game unbeaten and there were lots of positives to take from our performance."



**SUBSTITUTE EMILE  
SINCLAIR LETS FLY**



**PAUL JONES RECEIVES  
HIS MAN OF THE MATCH  
CHAMPAGNE FROM  
SPONSORS LONDON COOL**

Man of the match sponsored by [www.oliverstownhouse.co.uk](http://www.oliverstownhouse.co.uk)

# ARE YOU TIRED OF HAVING TO SHARE YOUR PITCH?



**TIRED OF PATCHY PITCHES, FREEZING FANS AND SHODDY SHOWERS?**  
We're giving 11 grounds a makeover. If you know one that needs some TLC, send us a photo and tell us why it needs help.

ENTER NOW AT [f/CAPITALONEUK](https://www.facebook.com/capitaloneuk)

**Capital One**

THE CREDIT CARD THAT SUPPORTS THE SUPPORTERS.



OFFICIAL CREDIT CARD OF  
THE FOOTBALL LEAGUE.

# Opposition SWINDON

**14:**

Cooper makes  
his Mark

**15:**

The Boss;  
View from  
the Press Box

**16:**

Meet  
the Robins

**19:**

Played for  
Both Clubs



**DANNY N'GUESSAN  
(LEFT) IS MOBBED AFTER  
SCORING IN SWINDON'S  
LAST AWAY GAME, A  
2-1 VICTORY AGAINST  
COLCHESTER**



# today's visitors

# **ROBINS ON A ROLL**

It's a season of transition at the County Ground as Swindon adjust to life with new owners and a different manager following the often turbulent reign of Paolo Di Canio.

Hard to believe that it's only nine months since the Italian brought his team to The Checkatrade.com Stadium openly questioning his future at the club after Swindon had sold Matt Ritchie to AFC Bournemouth a few days earlier.

After the televised 1-1 draw, Di Canio made a point of going over to the away fans that had sung his name throughout. A few weeks later he was off to Sunderland for what turned out to be a brief period in charge of the Premier League club.

In his place, after his appointment in August, is Mark Cooper,

a manager of considerable experience in the lower and non-leagues. He has been working with a much smaller budget and has far fewer backroom staff at his disposal than his predecessor, but whatever the constraints Cooper is doing an excellent job and it hasn't gone un-noticed in the changing room.

Nicky Ajose, who spent the first half of last season on loan here and who is with Swindon until January 1, has praised both Cooper and his assistant Luke Williams.

He told the Swindon Advertiser: "I think the manager and the assistant manager, Luke, have been excellent given the circumstances they're under at the moment – they've both been different class.

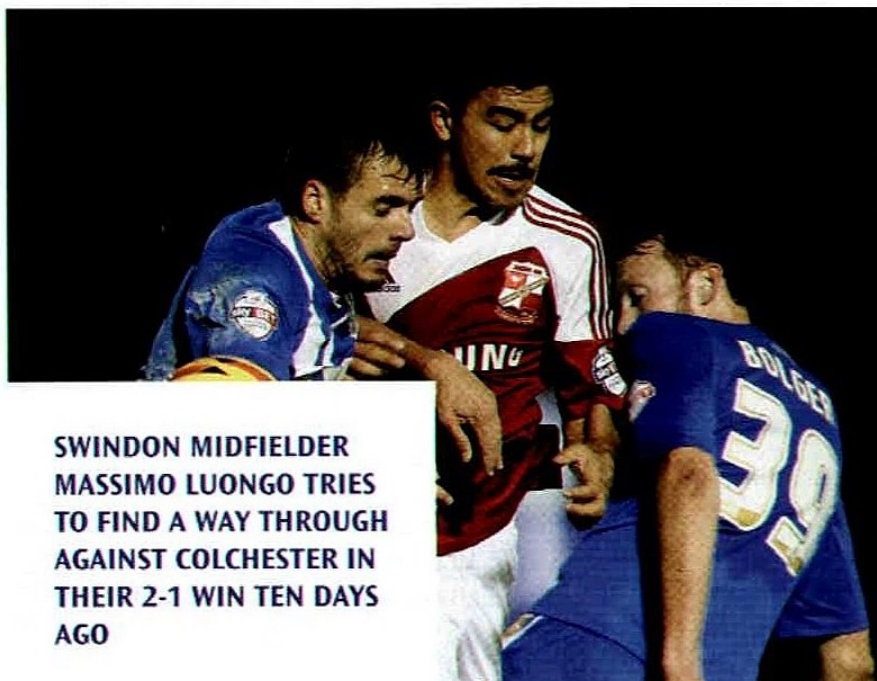
"It's a club that's changed playing-wise and budgets have changed over the last 12 months. If someone had said at this point of the season that you'd have a team from scratch, bar Darren Ward, Jay McEveley and Wes Foderingham, sixth in the league, in the semis of the Johnstone's Paint and with a good run in the Carling Cup you'd bite their hands off.

"The staff and Luke and Coops are very talented and they've come together, taken a scratch squad that's just been placed there and they're making us work. We're getting some really good performances."

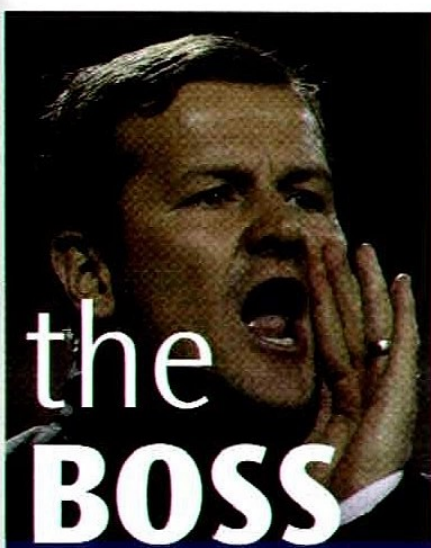
Williams knows Sussex well, having worked at Brighton's academy prior to his arrival in Wiltshire and Ajose added: "Luke is an unbelievable coach, one of the best, and Mark oversees it and it's a great team. Swindon have got something really special there."

The Robins went into their weekend game at home to leaders Leyton Orient on the back of wins over Wycombe in the JPT and a 2-1 success at Colchester in their last away game. It was the ideal response to their 4-0 thumping at Macclesfield in the first round of the FA Cup.

"Everyone was very down after that result but they've kept us going and instilled confidence," added Ajose. "We've bounced back and put together two wins in a row."



**SWINDON MIDFIELDER MASSIMO LUONGO TRIES TO FIND A WAY THROUGH AGAINST COLCHESTER IN THEIR 2-1 WIN TEN DAYS AGO**



## MARK COOPER

Mark Cooper was appointed Swindon boss in August, his sixth managerial appointment after a long playing career which took in 17 clubs and 457 games. The 44-year-old began his career as a trainee at Bristol City, but never made a first-team appearance. His League career included two spells at Exeter, where he scored 38 goals in 118 games, as well as Birmingham City, Fulham, Huddersfield, Hartlepool, Wycombe, Macclesfield and Leyton Orient. After ending his career in non-league, Cooper turned to management in 2004 at Tamworth and got them into the FA Cup third round in successive seasons. He left The Lamb in 2007 to join Kettering whom he guided to the fourth round of the FA Cup and an eighth-place finish in the Conference. His first League appointment came at Peterborough in 2009 but he lasted just 13 games. He then took charge of Darlington, whom he guided to FA Trophy victory in 2011, and had another spell at Kettering. Earlier this year he had a brief period in charge of AFC Telford before being appointed No.2 at Swindon to Kevin MacDonald.

# how I SEE IT

**As we approach December, what do you make of Swindon's season so far?** It has been a lot better than a lot of people expected. After a lot of changes during the summer at all levels of the club they have exceeded expectations. There was a big upheaval in the club which was well publicised but under Mark Cooper they are playing some nice attractive football but conceding more goals than they would have preferred.

**Who are the key players in the side?** Swindon have recruited well in the loan market including three players from Tottenham. Young midfielder Ryan Mason has been instrumental in the centre of the park since his arrival, with a clear ability to both set up and score goals. Alex Pritchard, who has also come from Spurs, has also impressed. Up front they have two of the most natural finishers in the division in my opinion, with Nicky Ajose signed on loan from Peterborough and Danny N'Guessan, who moved permanently from Millwall in the

Swindon Advertiser Sports Writer Sam Morshead covers the Robins and gives us his assessment of their fortunes so far and what they can achieve in the remainder of the season

summer. Together they average a goal in every other game. **What has been their most impressive performance?** The 2-0 win at QPR in the second round of the League Cup immediately springs to mind as being particularly impressive. They also came back from Rotherham with a 4-0 win and have only lost once at home so far to Walsall. Overall, though, it has not quite happened away from home.

**What can Swindon achieve this season?** I think that is down to a number of factors. Cooper possesses a very small squad in comparison to the likes of Wolves and Peterborough so Town will have to hope for a limited number of injuries in the coming months, and hope they can continue to play at the standard they have set this season. The play-offs are a realistic target, but I can see them only scraping in to sixth place or just missing out. It will be a great achievement if they can seal a spot in the top six and I know that they are very keen on success in the Johnstone's Paint Trophy.

## We've Met Before

2005-06	Home	3-4	Friendly
2010-11	Home	1-1	FA Cup
	Away	3-2 aet	FA Cup
2011-12	Home	0-3	Football League
	Away	0-3	Football League
2012-13	Away	0-3	Football League
	Home	1-1	Football League



# meet the **ROBINS**



## **WES FODERINGHAM**



Has been Swindon's regular No.1 since joining on a permanent basis in January 2012, having previously enjoyed a productive loan spell from Crystal Palace. Started his career in Fulham's academy.

## **NATHAN THOMPSON**

Academy product who established himself in the Town defence last season and was named Player of the Year by the Swindon Advertiser.

## **TIJANE REIS**

The Portuguese winger signed a two-year deal with Town in the summer although injury has restricted his appearances this season.

## **RYAN MASON**

Mason signed a season-long loan deal from Tottenham in July, having made two first-team appearances for Spurs. The midfielder scored a hat-trick in the 5-0 demolition of Crewe earlier in the season.

## **NATHAN BYRNE**

Defender who penned a two-year deal with Swindon in the summer of 2013 after a successful loan spell the previous campaign. Had a three-month loan spell with Reds last season, which included a goal on his League debut for the club against Carlisle United, before heading to the County Ground where he has played on both flanks with great success.

## **MASSIMO LUONGO**

Stylish midfielder who joined Swindon from Tottenham on a season-long loan in the summer before completing a permanent move just before transfer deadline day in September.

## **NILE RANGER**

The former Newcastle United striker signed a one-year contract in the summer of 2013 and has two goals for the club so far.

## **RYAN HARLEY**



The experienced midfielder joined Town in July after his release from Brighton. Made his name with Exeter City before securing a move

to Swansea City. Spent part of last season on loan with MK Dons and headed for a new challenge because of limited opportunities at the AMEX.

## **GRANT HALL**



A tall, imposing centre-half who is on a season-long loan from Tottenham Hotspur. Hall has started to form a solid partnership at the heart of the Town defence alongside his experienced skipper Darren Ward.

## **ALEX PRITCHARD**

Pritchard joined Town on a season-long youth loan from Tottenham in the summer. After a spell at Peterborough towards the end of last season, the winger made his Swindon bow on the opening day against Posh. He has international caps with England's Under-20s and represented his country at the recent Under-20 World Cup

## **JAY McEVELEY**

A former trainee with Blackburn Rovers, the defender joined Derby County after loan spells

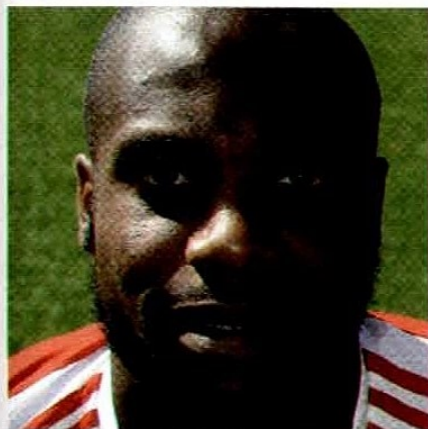


with Burnley, Gillingham and Ipswich and helped the Rams to the Premier League in 2007. The 27-year-old subsequently played for Barnsley before joining Swindon in 2012 following a successful loan spell.

#### **YASER KASIM**

A former player with Brighton's Academy, Kasim penned a permanent deal with Swindon in the summer and the holding midfielder has since spent time on loan at Luton Town and Macclesfield Town to gain first-team experience.

#### **DANY N'GUESSAN**



N'Guessan penned a deal until the end of next season in August. The former Millwall front man has played for a number of clubs with his most prolific stint coming at Lincoln City. Has also played for Leicester City. Scored in Swindon's last away fixture, a 2-1 win at Colchester ten days ago.

#### **MARK FRANCIS**

Another product of the club's Academy, the wide player penned senior forms with Swindon in the summer having made his League debut at Sheffield United towards the end of last season.

#### **CONNOR WALDON**

Swindon-born Waldon is a product of the club's Academy system and signed professional forms in the summer. The striker made his Town debut as a substitute

against Stevenage at the end of last season.

#### **ALEX FERGUSON**

Midfielder Ferguson turned professional in the summer after graduating from the Academy. He is a former Under-18 captain.

#### **LOUIS THOMPSON**

Former trainee who played alongside brother Nathan in an FA Cup tie against Macclesfield last season, the first time two brothers had played in the same Swindon side since 1947. The midfielder has represented Wales at youth level.

#### **MILES STOREY**

Another Academy product, the young striker made his mark last season with two goals in a Capital One Cup tie against Aston Villa at the County Ground.

#### **ALEX SMITH**

Smith joined from Fulham in the summer where he had made appearances in the first team at Craven Cottage. The defender made his Swindon debut on the opening day at Peterborough.

#### **DARREN WARD**



As Swindon's captain, Ward marshals the team from his position at centre-half. Having joining initially on loan from Millwall, the 33-year old penned a permanent deal in January 2012. Former clubs include Watford, Millwall, Crystal Palace and Wolves.

#### **JACK BARTHAM**

The versatile youngster, who can play in defence or in midfield, penned a one-year deal at the start of the season, having previously played in Tottenham's youth team.

#### **TYRELL BELFORD**

Belford signed a deal with Town in the summer of 2013 following his release from Liverpool's Academy and provides cover for goalkeeper Wes Foderingham alongside Leigh Bedwell.

#### **AARON OAKLEY**

A product of the Academy, Oakley penned his first senior deal in the summer. The 6ft. 7in. central defender has represented Wales at youth level.

#### **RAPHAEL BRANCO**

Formerly with the academy at Brighton, the Brazilian centre-half penned a deal in the summer after a successful trial.

#### **LEIGH BEDWELL**

Bedwell is a Swindon Town fan and was one of two second-year scholars awarded a professional deal in 2012. Understudy to Wes Foderingham.

#### **NICKY AJOSE**

The striker joined Swindon on loan until January 2014 from Peterborough, having played for both Reds and Bury last season. Scored in Swindon's last away game at Colchester.

#### **KAYDEN JACKSON**

Kayden was one of two winners of Samsung's 'Win A Pro Contract' competition in 2013. The Bradford-born striker joined up with Town in pre-season but is yet to feature in a first-team match.

## Holiday Inn London - Gatwick Worth



## Holiday Inn London Gatwick Worth

- Close to both Gatwick Airport and Crawley Town Centre.
- 118 refurbished bedrooms.
- Family rooms available.
- 4 State of the Art Conference rooms; Perfect to host a Wedding, Birthday or Anniversary Celebration.
- Lyttons Bar and Brasserie serving an extensive menu of international cuisines.
- Wifi throughout hotel.
- Ample on-site parking.
- Starbucks coffee lounge.

**Book direct for best rates**

Holiday Inn London - Gatwick-Worth  
Crabbet Park, Turners Hill Road, Worth, Crawley RH10 4SS  
Located next to Nuffield Health Fitness & Wellbeing Centre  
T: +44 (0) 1293 884 806 | E: [info@higatwickworth.co.uk](mailto:info@higatwickworth.co.uk)  
[www.higatwickworth.co.uk](http://www.higatwickworth.co.uk)



# the ex FILES

**EIGHT PLAYERS HAVE REPRESENTED OURSELVES AND THE ROBINS, INCLUDING FOUR WHO COULD WELL BE IN ACTION TONIGHT.**



Striker **Gary Alexander** was signed by Swindon from Exeter for £200,000 back in 2000 and in a season at the County Ground he scored seven times in 46 appearances before moving on to Hull City.

In the Swindon ranks tonight are two players who had productive loan spells with us last season when we played for the first time in League One.

Striker **Nicky Ajose** arrived on loan the day before the opening game from Peterborough United. Nicky started 11 of the 21 games he was involved in and scored twice, including a memorable winner to knock Championship side Bolton out of the Capital One Cup. After he returned to London Road, Nicky went on loan with former club Bury before linking up with Swindon in August.

Right-back **Nathan Byrne** (*pictured*) joined the club from Tottenham in September 2012 and was a regular in the side after debuting in the Capital One Cup defeat to Swansea. A few days later he was on target in the 2-0 win at Carlisle on his League debut. Nathan linked up with Swindon in March and played nine games before signing permanently at the County Ground in July.

Goalkeeper **Phil Smith** (*pictured*) was with Reds for two seasons after signing in 2004 and made more than 70 appearances. He joined Swindon in 2006 and



played 129 games for the Robins before he was released at the end of the 2011-12 campaign. Smith is now with Portsmouth, having signed a one-year contract in the summer.

Another goalkeeper with links to both clubs is **Jimmy Glass**, although his claim to fame came when he scored a last-minute goal for Carlisle against Plymouth which secured their Football League status in 1999.

Jimmy spent two seasons at Swindon in 1998 and in 2001 he arrived at Crawley and made 17 appearances in our Southern League days. These days Glass is living in Dorset and running a taxi company.

**Michael Gordon**, a one-time Arsenal apprentice, was at both Swindon (2004) and Crawley (2005) without making a first-team appearance. The midfielder, who is still only 29, was last heard of

playing in the Ryman League for Kingstonian.

Finally, there is striker **Leon Clarke** who is banging the goals in for Coventry City this season. Leon has had 13 clubs in a decade in the game since starting out at Wolves including four matches for Swindon in 2011, a relationship which ended when he had a touchline row with then manager Paolo Di Canio during a League Cup defeat against Southampton, 11 days after he had joined the club.

## **PLAYED FOR BOTH CRAWLEY AND SWINDON**

- Gary Alexander,
- Nathan Byrne,
- Leon Clarke,
- Jimmy Glass,
- Michael Gordon,
- Luke Rooney,
- Phil Smith.

**HOT NEWS** ❄️ **COOL PRICE!**

When you  
subscribe for one  
year to your

**Crawley and Horley  
Observer**

That's a total  
annual cost of only  
**£19.24**



ONLY  
**37p**  
PER WEEK

To subscribe online follow the easy step-by-step process at:

[www.subscriptionline.co.uk](http://www.subscriptionline.co.uk)

For more information call: 0844 991 6464

**Working together for a safer world.**

Defence

Security

Aerospace

Transportation

Space

Supporting the Crawley community for over 60 years



Whenever critical decisions need to be made, Thales has a role to play. In all the markets we serve – Defence, Security, Space, Aerospace and Transportation – our world-class technologies and people, including an 8,000 strong team right here in the UK, see Thales assist its customers in assuring the security of citizens, infrastructure and nations. To find out more, scan the QR code or visit [thalesgroup.com/uk](http://thalesgroup.com/uk)

**THALES**  
Together • Smarter • Safer

# our former players

## THEY ALSO SERVED

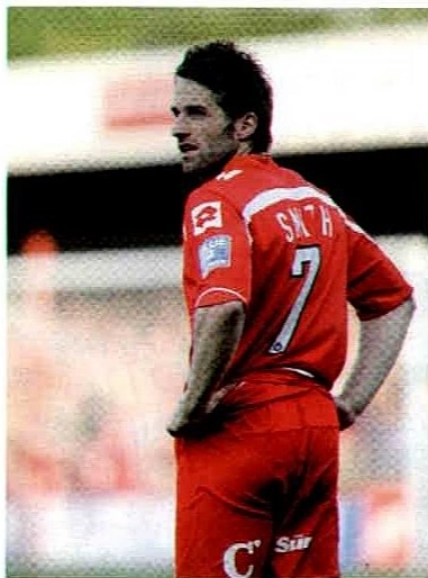
Warren Lucy reports on the careers of our former players

### JOHN AKINDE

Powerful striker Akinde, who scored his solitary Crawley competitive goal against Shrewsbury Town in 2012, now has seven in 17 games for Nicky Law's Alfreton following his most recent strike in the game against Braintree Town. John scored the opener as he helped his side to a 3-1 victory over the Essex side last week. Tom Shaw and Josh Law added the other two goals as Alfreton ran out comfortable winners to rise up to sixth place in the Skrill Premier. Akinde joined the Reds in 2010 after his release from Bristol City and had a loan spell with Dagenham & Redbridge during his 18 months with Reds.

### BEN SMITH *(pictured left)*

Former fans favourite Ben has a new job as youth coach at Skrill Premier side Braintree Town. Ben, who famously scored the winning goal in Reds' 3-2 FA Cup 2nd round replay win against Swindon in December 2010, currently plays part-time football with Thurrock as well as teaching at the Maltings Academy in Essex. An attacking midfielder with an eye for goal, 'Smudger' netted 12 times in 68 Crawley appearances before being released at the end of the 2011-12 season following loan spells with Kettering Town and Aldershot Town.

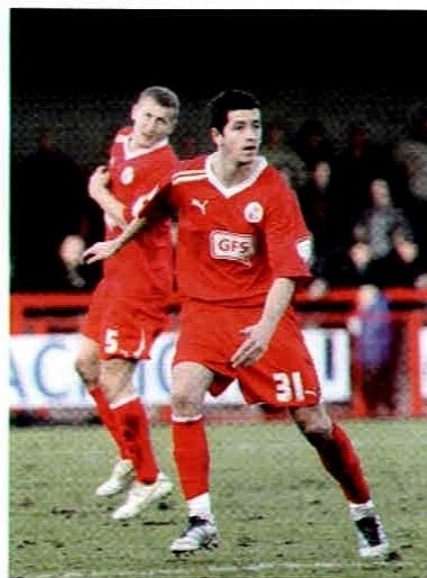


### RICHARD BRODIE

The ex-Reds striker is on the move again, this time to Skrill Premier side Southport on loan from Gateshead. Brodie had a loan spell with Hereford United earlier in the season and will now be on Merseyside until January 2014. He only moved to his home-town club in the summer following his departure from Crawley and has appeared eight times for Gateshead, scoring twice. Brodie arrived at Crawley on deadline day of 2010's summer transfer window from York City. He scored 11 times in 25 starts for the club before spending two years on loan with Morecambe, Fleetwood Town and Grimsby Town.

### SHAUN BATT AND LLOYD JAMES *(pictured right)*

Both ex-Reds loanees scored for their current club Leyton Orient in the O's recent 5-2 FA Cup first round victory over Southport.



Batt, who joined Crawley for a brief spell from Millwall in 2012, netted twice whilst James's first Orient goal on the stroke of half time set Russell Slade's side on their way to a comfortable victory. Versatile Lloyd joined the club on a temporary deal from Colchester United and appeared six times in just over a month in the Spring of 2012. Shaun played five times in two months with us but failed to score after struggling with niggling injuries.

# We're proudly supporting Crawley Town Football Club (with our very own Red Devils).



## **Eurovans (Crawley) - your local Volkswagen Van Centre.**

- Award-winning New Van Range
- Servicing, Maintenance & MOT's
- Finance & Insurance Solutions
- Van Rental
- Accessories
- Huge range of used vans in stock

Find us at Overdene Drive, Ifield, Crawley RH11 8DU

**01293 848300**

[www.eurovans.co.uk](http://www.eurovans.co.uk)

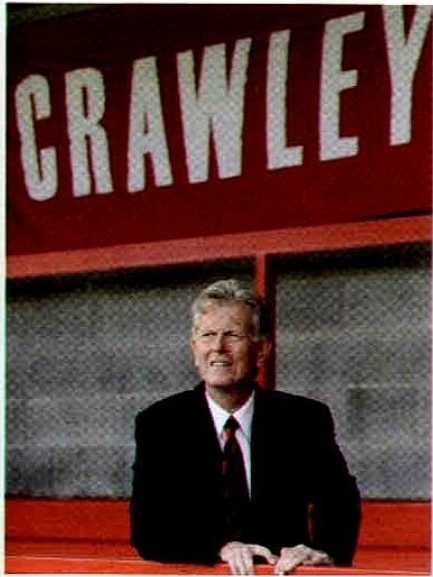
*Very*  
**Volkswagen Commercial Vehicles**



**Commercial  
Vehicles**

# Michael Dunford

## VIEW FROM THE TOP



**GOOD EVENING EVERYONE AND WELCOME TO OUR VISITORS SWINDON TOWN FOR THIS SKY BET LEAGUE ONE FIXTURE.**

I'm delighted to give you details of the club's first Community Carol Concert on Monday, December 16, starting at 7pm.

The AJD Group West Stand will be open and it's a great opportunity for members of the Crawley Town family, including players, supporters and management, to come together to celebrate the true meaning of Christmas.

Three local schools will be taking part: Seymour Primary School Broadfield, St Andrew's Primary School Furnace Green and the Forest School in Horsham and the concert will be led by our club chaplain Rev. Gary Simmonds. I would like to thank Gary for his efforts in organising the event at

what is already a busy time for him in the build-up to Christmas.

Please come along and enjoy what should be a great evening. Refreshment facilities will be open and admission is free to everyone.

On Saturday at the Walsall fixture our supporters who use The Checkatrade.com East Stand were canvassed for their opinions on our catering facilities in that part of the stadium. We have already received some constructive suggestions, together with those that came as a result of my supporter surgeries, which we will be considering in detail.

At the Preston game on December 14 we will be seeking the views of fans in the Bruce Winfield South Stand and on December 29, when we play Notts County, it will be the turn of AJD Group West Stand supporters to have their say. Unfortunately, tight finances might mean we can't act on every suggestion but we will do our utmost to implement as many as we can and I would like to thank all supporters who have been in touch to have their say.

A reminder that we will have a town centre presence between December 9-22, either in County Mall or Queen's Square so if you doing your Christmas shopping make sure you come along to see us and get yourself some great Crawley Town gifts. Remember, all Puma stock is 50% off including replica kits and there are lots of

other present ideas.

Finally, details of the ticket arrangements for the Wolves game on January 18 can be found on page 57 of tonight's programme.

I have written to all Junior Reds season-ticket holders who, for this fixture, will have to obtain their ticket for the match in advance. There is also an advance sales period for anyone who has purchased a match ticket from us this season, which starts on Sunday December 8. We have given Wolves their maximum allocation of 2,100 and they expect them to sell out so hopefully we will have a full house and a fantastic atmosphere.

Thanks for coming out to support the team tonight. We've had some really entertaining games with Swindon in recent years and I'm sure this one will be no different. Keep the faith and keep it Red!

**KEEP THE FAITH!**

A handwritten signature in black ink that reads 'Michael'. The signature is written in a cursive style and is underlined with a single horizontal stroke.

**MICHAEL DUNFORD, CEO**



# in the NEWS

**This Saturday we head to Crewe with coaches leaving the Checktrade.com Stadium at 7.30am - a lie in for those of you who travelled to Carlisle.**

The fare will be £25 for non-members and £20 for members.

Then, on Saturday December 7, we search for more FA Cup glory as we head to Bristol Rovers, famous as the place where Special Brew Bowman stalked Noel Edmonds (you had to be there)!

The cost of this trip will be £20 for members and £25 for non-members, and coaches will leave the Checktrade.com Stadium at 9.30am.

Given our recent departure times, that's almost lunchtime!

Members can also pay a combined £35 and be transported in luxury to both this match and the league match at Crewe this Saturday.

## HOW TO BOOK

You can book at the CTSA Cabin opposite Redz tonight or pop into club reception during normal office hours and book there.

Finally, you can contact Megabus Matt and Travel Tracey on 07843 124845 or email via [travel@ctfcsa.co.uk](mailto:travel@ctfcsa.co.uk)

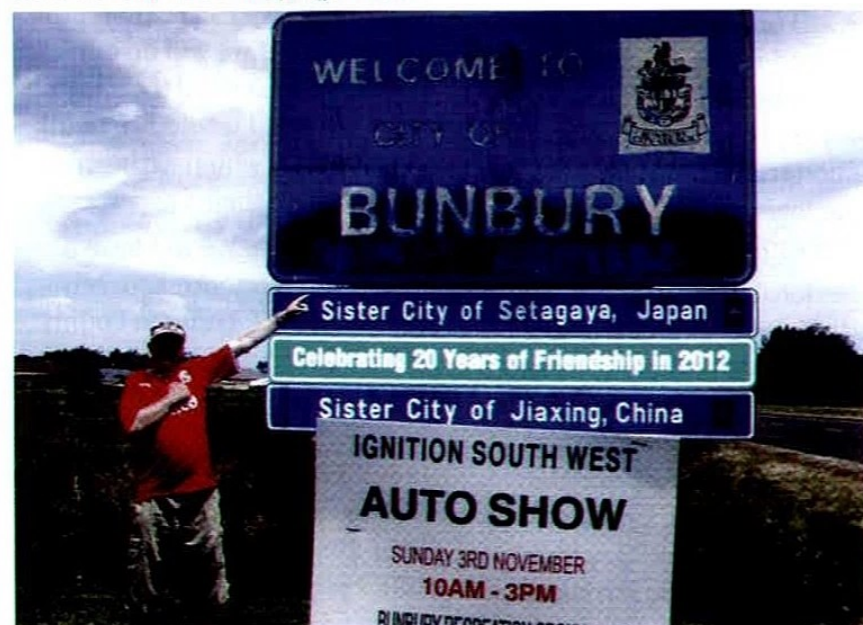


## ON THEIR TRAVELS

**REDS FANS HAVE BEEN ON THEIR TRAVELS AND WEARING THEIR COLOURS WITH PRIDE ON OPPOSITE SIDES OF THE GLOBE.**

Below, we see Michael Bish in Bunbury, a town 180km south of Perth, Western Australia and above, another season-ticket holder Rees Hopcraft with son George and daughter Amy in their shirts at Universal Studios, Florida.

Keep sending your photos in to [programme@crawlleytownfc.com](mailto:programme@crawlleytownfc.com) and we'll use them in the programme.





# TOWN CENTRE REDS



**WE ARE PLEASED TO ANNOUNCE THAT OUR NEW TOWN-CENTRE KIOSK IS NOW OPEN AND IS SITUATED IN QUEEN'S SQUARE, NEXT TO COSTA AND FACING OUT TOWARDS THE BANDSTAND.**

On sale will be match tickets for forthcoming home games and a range of merchandise. Our staff will also be able to answer any questions you have about the club. Here are the dates it will be open in the next few weeks:

- Friday, 6 December 2013 – Sunday, 8 December 2013, 10-4pm
- Monday, 9 December – Thursday, 12 December, 10am-4pm
- Friday, 13 December 2013 – Sunday, 15 December 2013, 10am-4pm
- Friday, 20 December 2013 – Sunday, 22 December 2013, 10am-4pm

We will also have a bigger outlet in the County Mall all this week. It is situated next to H. Samuel.

On all dates there is **50% off all Puma branded items**, except the third shirt, in Queen's Square and at the Club Shop. Start your Christmas shopping early and grab yourself a bargain!

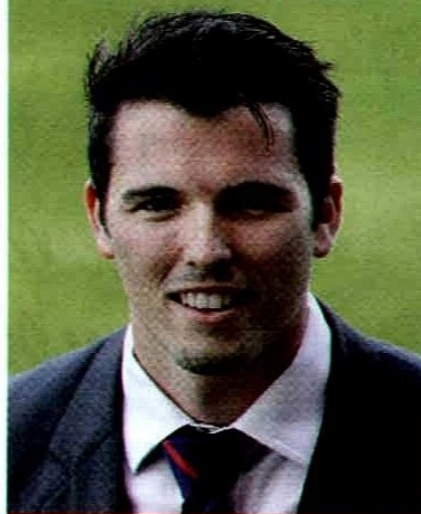
## CRAWLEY ACTION GROUP

**THE ACTION GROUP IS A VOLUNTARY GROUP FOR PEOPLE WITH DISABILITIES, WHO MEET FORTNIGHTLY AT CRAWLEY BAPTIST CHURCH.**

The group has made five documentaries in their community about their experiences in everyday life that affect their wellbeing.

The latest documentary "Speak Out On Hate Crime" was 18 months of hard work for the group but very rewarding. We as a group would like to take this documentary to schools, colleges, day centres and educate people on Hate Crime so young adults will understand that people with disabilities should be treated just the same as anyone else in our community. We are planning a tour of "Speak Out On Hate Crime" around Sussex next year so if you would like to sponsor or donate to the group please email:

- Chairmen Steven Bateson [steven@action-group.org.uk](mailto:steven@action-group.org.uk) or
- Vice Chairmen Lawrence Mallinson
- [lawrence@action-group.org.uk](mailto:lawrence@action-group.org.uk) for more information
- or check out their website [www.action-group.org.uk](http://www.action-group.org.uk)



## MICHAEL KURN

After three weeks without a home game this is our second in four days and we welcome all those who have travelled from Swindon Town tonight. As usual we have lots of opportunities to get involved and be part of the build up to today's League One fixture whether you are a home or away fan. Coming up we have:

- Home v Away Quiz
- Junior Reds Challenge
- Half Time Checktrade Challenge

Also don't forget we want to hear from you on a match day.

You can do that via Twitter by tweeting us @crawleytown with your score predictions ahead of the game or why not send us a picture of you inside the ground. Make sure you use the hash tag #CTFCMatchday

Also, remember that for £10 you can get a birthday or anniversary mentioned three times on the scoreboard and in the programme! For details call Sue on 01293 410000 or email [suebenn@crawleytownfc.com](mailto:suebenn@crawleytownfc.com)

Get behind the lads and

**COME ON YOU REDS!**

A man with dark hair and a goatee, wearing goggles on his head, is smiling broadly while standing in a swimming pool. He is holding a white sign with a green vertical stripe on the left side. The sign has handwritten text in black ink. The background shows blue water with some splashes.

I want to enjoy  
a free month's  
membership  
for improving  
my fitness.

Join the health club that turns  
your efforts into rewards.

Call the centre today for a FREE day pass!\*

Visit Crabbet Park, Turners Hill Road, Crawley, RH10 4ST

Call 01293 884 488

Or go to [nuffieldhealth.com/local](http://nuffieldhealth.com/local)

 **Nuffield Health**  
fitness & wellbeing

\*Free pass only available to non-paying members. ID will need to be provided. Offer subject to availability. Some restrictions may apply. See website for full details. © Nuffield Health 2011

# Twelve games a' calling!



Half-season ticket holders enjoy the benefits of full season ticket holders\*

Tickets available from 21<sup>st</sup> October. First game v MK Dons on December 26, 2013

## EXECUTIVE SEAT PRICE £699

The AJD Group West Stand	
Adult	£220
Over 65s	£180
U-18s and U-12s*	£104

The Checktrade.com East Stand	
Adult	£190
Over 65s	£150
U-18s and U-12s*	£80

The Bruce Winfield Terrace	
Adult	£170
Over 65s	£130
U-18s and U-12s*	£56

*Terms and conditions apply\**

# team behind the team

## GROUNDSTAFF

**THROUGHOUT THE SEASON WE WILL BE TALKING TO MEMBERS OF STAFF BEHIND THE SCENES TO FIND OUT ABOUT THEIR ROLE AT THE CLUB. TONIGHT WE CATCH UP WITH GROUNDSMAN MATT MOSS AND HIS ASSISTANT TOM MARTIN, WHO ARE PREPARING THE PITCH FOR THE WINTER AHEAD.**

### **What do you do at the club?**

**MATT:** We are the groundsmen so that basically involves maintaining the pitch. We have to do a variety of jobs which includes turf maintenance, cutting and marking the pitch and general jobs around the Stadium including cleaning.

### **What do you enjoy most about your job?**

**TOM:** As a Crawley Town fan I enjoy working for the club I support, interacting with the staff and fans. I also enjoy the isolation of the job - just getting my head down and getting the job done.

**MATT:** Getting the pitch ready for a home game and knowing that when the game is going on that you're part of the whole backroom team at the club who have pulled together to get ready for the match. If the pitch is in good condition then even better!

### **How important is your job?**

**MATT:** Without a good playing surface the players can't implement Richie Barker's style of football so it's important the pitch doesn't restrict the players

in any way. I liaise with Richie on a regular basis about all aspects of pitch preparation down to how much grass we should take off when when cut it, depending on the time of the season.

### **What do you do on a matchday?**

**TOM:** If it's a Saturday it's an early start at around 6am to prepare the pitch for the game, mark the lines, put the goals up, penalty spots, corner flags etc. and make any last-minute adjustments before kick off. Then we divot after the warm-up, during half time and then post-match.

### **What was your background before joining the club?**

**TOM:** I did a variety of jobs. I worked in a garden centre, did warehouse work, worked on a farm, for a removals company and was also a regular attendee of Crawley matches. I also did a spot of part-time modelling in the club merchandise catalogue!

**MATT:** I spent eight years as a groundsman at a private school in Reading where I maintained the football, cricket and rugby pitches for the school. I joined the club in June this year, but have not been asked to do any modelling!

### **How are you going to maintain the pitch throughout the winter?**

**TOM:** We will verti-drain the pitch regularly and in the last few days we have got the frost sheets out ready to counter sub-zero temperatures.

**MATT:** Winter is our biggest challenge without a doubt because it's the non-growing season, which means grass takes twice as long to grow.

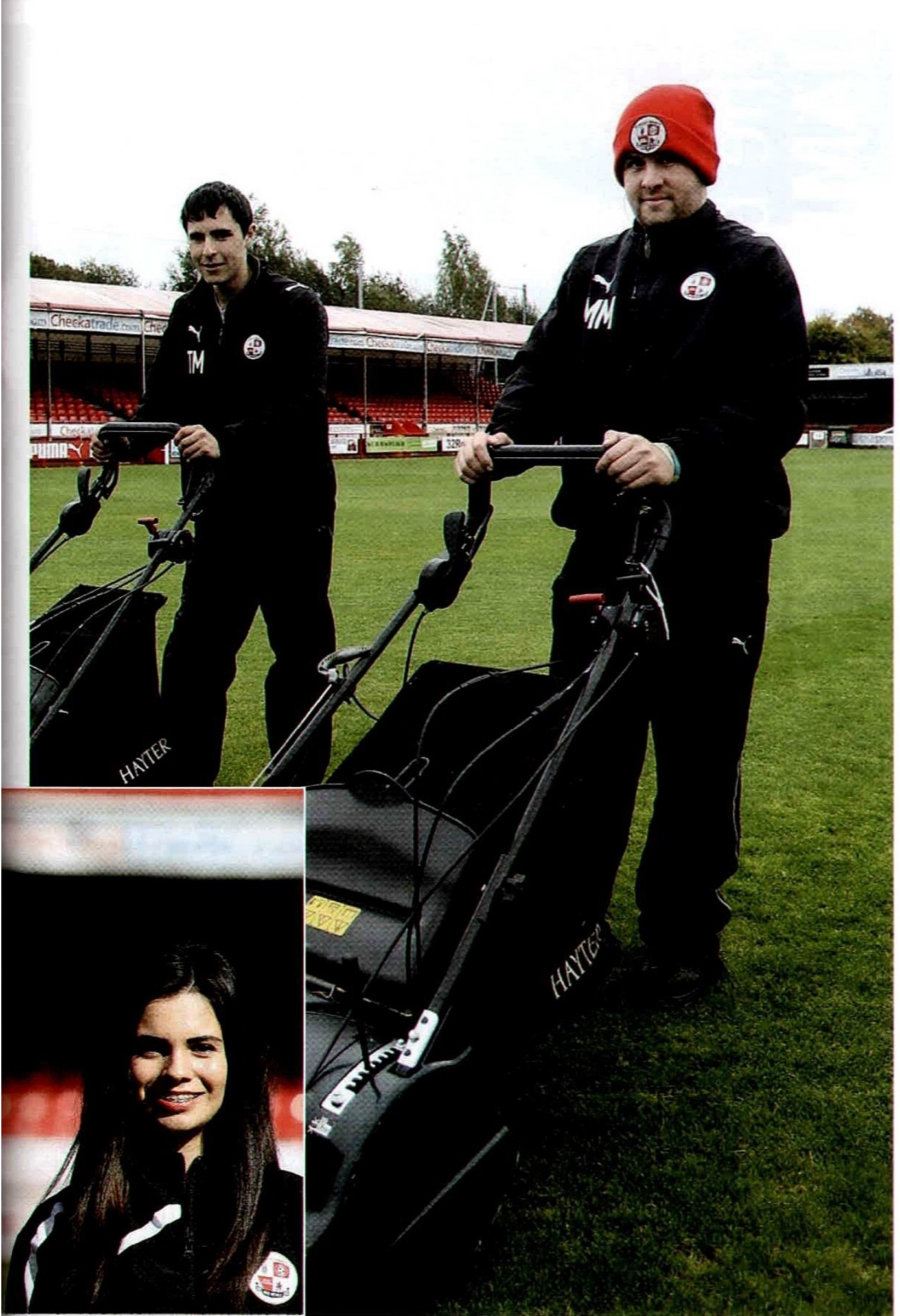
### **What motivates you?**

**MATT:** A matchday week motivates me, knowing the lads need you to produce a good pitch for them on Saturday. That is what inspires me to do my job well.

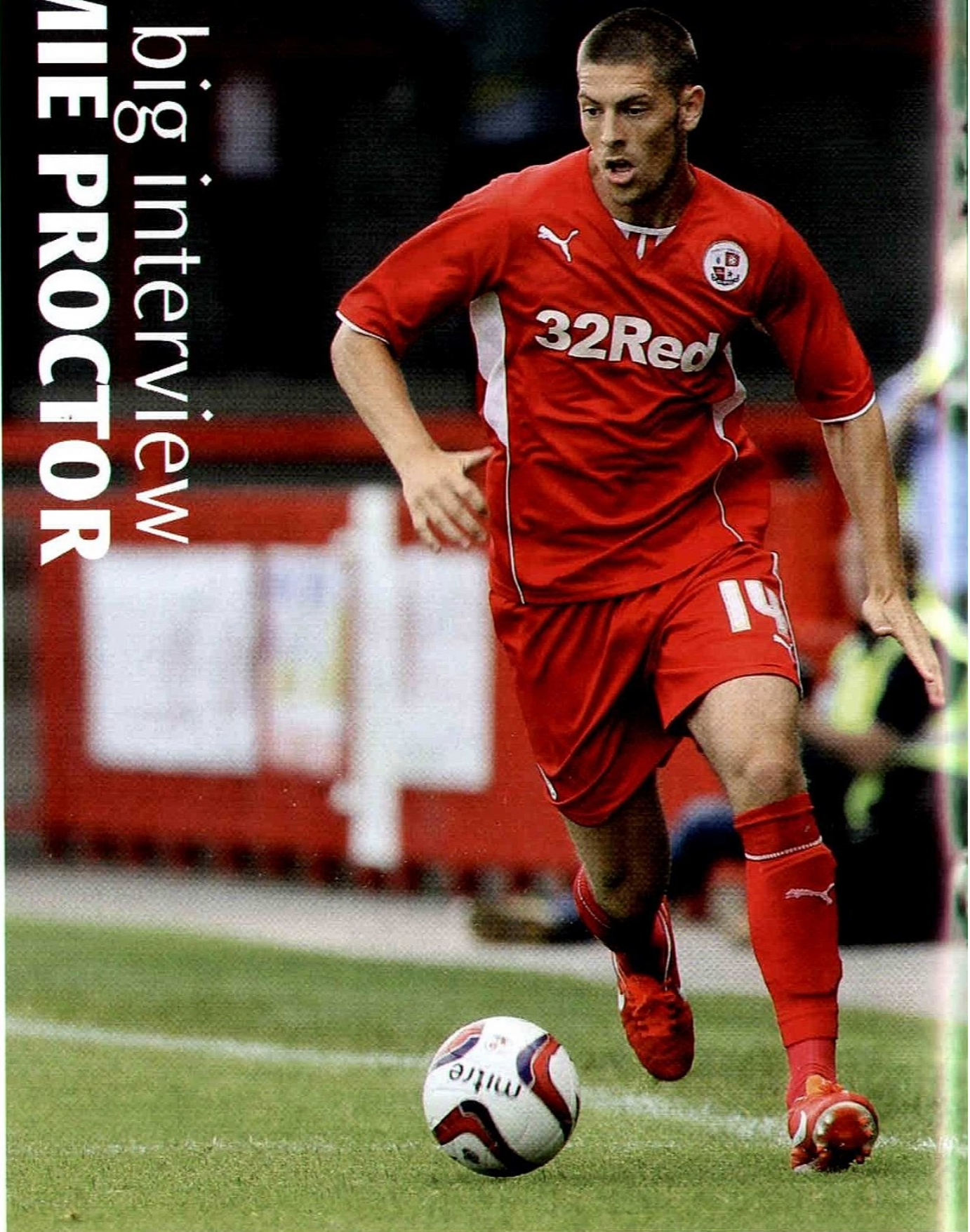
**TOM:** When the lads pick up the three points and the pitch has held up, that's almost a perfect Saturday for me!

### **TOM AND RECEPTIONIST SOPHIE HARDING ARE THE CLUB'S PART-TIME MODELS!**





the big interview  
**JAMIE PROCTOR**





## **Ben Blackmore catches up with striker Jamie Proctor who insists there's a lot more to come from him as he approaches a year at the club**

**Jamie, it's coming up to a year with the club. How would you sum up your time with Crawley so far?**

It's been good and I've enjoyed it ever since I've joined, the lads and the gaffer have been fantastic. We did well last year and were a little bit disappointed we missed out on the play-offs and I thought I did well. This year has been okay but I haven't scored as many goals as I would have liked. Recently we haven't been playing too well but overall I would definitely say it's been a good first 12 months at the club.

**We've sometimes played with one up top this season, does this mean you have to adjust your game?**

A little bit. Last year we didn't consistently play with one up top, we did a few times but we always had Billy in and around me who is more attacking minded than Andy or Nicky when they play behind the front man. It is a different role but I've played it before and I've played it enough times this year to know what the gaffer wants from me. The three of us have been rotating: me, Gary and Emile and whoever gets the shirt we all know our job.

**You seem to have formed a good partnership with Emile Sinclair, would you agree?**

I like playing with two up front, you get a little bit of support and it takes a bit of pressure off your shoulders. I think I've been getting more chances in on goal when I've played with Emile but I've also enjoyed the fact that we have created opportunities for each other too.

**And I'd imagine someone with Gary Alexander's experience is a massive help?**

Gaz has a lot of experience, a lot more than Emile and me and when he's in or out of the team he is always passing on bits of advice.

**I guess when you aren't in the team it's the time to work even harder in training to impress.**

When you do play and things aren't going for you, you have to stick at it and dig your heels in and work harder. The FA Cup game at Hednesford is an example of that. It wasn't the greatest game for the lone striker to play in because I got battered around the place and you're not really getting much of the ball, but I worked hard and did my best for the team. The gaffer changed it at the end to freshen things up and Emile scored the winner but I'd like to think I always put effort in to keep my place.

**It was a tricky game at Hednesford. Do those sort of experiences improve you as a player?**

You can't ask whom you're going to play against, especially in this league as there are some big strong defenders. It was the same at Hednesford if not bigger and stronger. It's always going to help me mature playing against those sort of physically strong players as well as defenders who are slightly more technical and can read the game well.

*(continued)*

ROAD FREIGHT SEA FREIGHT AIR FREIGHT



AIR FREIGHT | SEA FREIGHT | ROAD FREIGHT | IMPORT BROKERAGE  
EXPRESS COURIER | PACKING AND WAREHOUSING



THE ART OF FORWARD THINKING

KRL is a privately owned international freight, UK transport and packaging company with over 50 years' experience. We offer comprehensive services to and from all major UK sea and airports. As one of a network of 400 freight professionals worldwide we provide effective, economic, freight solutions which minimise tax and handling costs.

State of the art technology enables us to provide a seamless, fast, cost-effective and accurate service, tailor-made to your business, large or small. For a free and rapid quote call now on 01293 867980.



01293 867980 info@kr-l.com www.kr-l.com



**Preston at home is coming up – a game that you're no doubt looking forward to?**

As a Preston lad and ex-Preston player it was one of the first fixtures I look for and so did my family because they're trying to get to the game. Last year it

was called off and I didn't actually start the re-arranged match, so I am looking forward to it this time. Preston away at Deepdale is probably the fixture I look forward to most all season. It's always nice to play in lovely stadiums but this one has special meaning to me so I'll enjoy it a little more if I'm selected.

**What can we achieve this season?**

I think the gaffer has done a fantastic job. I don't think anybody expected us to do as well as we did last year and we started well this season. Recently we have been off the pace a bit and we need to get a little run going to get everybody going again.

**You scored a great goal against Coventry on the opening day of the season. Was that the best you've ever scored?**

Probably yes because it was on the opening day and because of how good a team Coventry are - I think we've been only one of a few teams to beat them. It was a special goal and I will remember it for a long time.

**Tell me about the Pease Pottage crew?**

It's me, Nicky Adams, Mike Jones and Jonny Maddison, we all live in a house together. We can all have our arguments and our fallings-out but it's a laugh and I wouldn't have it any other way. We don't do much except go to the cinema every night but it's a great laugh. It's a chance to get away from football and socialise with some of the other lads.

**What are your own ambitions for the rest of the season?**

I would love to hold down a regular place in the side and the way to do that is to score goals when I get the opportunity - it's as simple as that.

The Gaffer has got options up front with four strikers if you include Billy and only one person can make sure I play every game and that's me.

I have really enjoyed my first year at the club but I want to push on now, keep improving as a player and scoring as many goals as I can.



9: Gary Alexander



# Andy Drury

## ON MY BIRTHDAY



**SAM GOOLD-KNIBBS TAKES A LOOK AT EVENTS IN NEWS AND SPORT ON THE DAY ONE OF OUR PLAYERS WAS BORN. TODAY IT'S ANDY DRURY WHOSE BIRTHDAY IS ON THURSDAY. ANDY WAS BORN ON NOVEMBER 28, 1983.**

### 1990

#### IRON LADY STEPS DOWN



Margaret Thatcher left 10 Downing Street for the last time after 11 years in power. The first female Prime Minister in British political history was voted out by her own party in a leadership contest which was won by Sir John Major, who stepped down himself after the Conservatives lost the general election by a landslide to Labour in 1997.

### 1999

#### NUDE SWORDSMAN ATTACKS CHURCHGOERS

11 people were injured after Eden Strang burst into St Andrew's Roman Catholic Church, Croydon, naked whilst wielding a sword. He was charged with seven counts of attempted murder and six accounts of assault. Strang denied all charges and said he attacked the worshippers because he believed they were demons. In June 2000, an Old Bailey jury declared him not

guilty for reasons of insanity and he was placed in a psychiatric hospital. The Police released him two years later, under monitor.

### 1967

#### HORSE RACING AFFECTED BY FOOT AND MOUTH



Horse racing in the UK was halted for two months, and in some places even longer, to try to prevent the further spread of foot-and-mouth disease, which was at its peak at the time and had killed 400,000 animals.

The suspension of horse racing is believed to have cost the government 1million pounds per day in lost betting tax. In 2000, another outbreak of the disease dwarfed the disaster of 1967 when an estimated four million animals were slaughtered across the country.

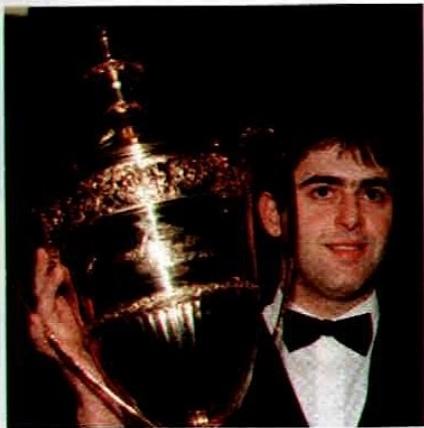
# 1971

## FARMER CRACKS SMUGGLING RING

An English farmer smashed a major smuggling operation after he rammed a plane that had landed in a disused airfield on his farm. Ray Convine had been asked to monitor the airfield by the police and he became suspicious after he noticed two people waiting nearby. He confronted a driver and a passenger parked in a car near the runway, moments before a plane touched down. After being spotted, the plane tried to take off but Convine rammed his truck into its side. Police arrived moments later and detained five men but the pilot escaped. Convicted forger Raymond Back handed himself over to Scotland Yard and was charged with organising the smuggling, but died in Paris before standing trial.

# 1993

## RONNIE O'SULLIVAN WINS AT 17



The 17-year-old Ronnie O'Sullivan beat Stephen Hendry 10-6 in the UK Championships to become the youngest snooker player to win a ranking tournament. Since his triumph, O' Sullivan has won 25 ranking titles which include five World Championships, which he currently holds, and four UK Championship titles.

# 1964

## THE WORLD'S FASTEST HAT-TRICK

Ross County striker Tommy Ross scored the fastest hat-trick in history when he netted three in 90 seconds in an 8-1 win over Nairn County in the Highland League. It was widely believed that James Hayter held the record when he scored three for Bournemouth in two minutes and 20 seconds against Wrexham in 2004. County had assumed that Ross's claim would be invalid as only the referee was keeping time in their match. A claim was lodged to the Guinness Book of Records and this was verified in 2004.

# 1998

## SOUTH AFRICA EQUAL ALL BLACKS' UNBEATEN RECORD



South Africa won 27-13 in Dublin to equal the All Blacks' world record of 17 consecutive wins.

The Springboks scored three tries to Ireland's one and Percy Montgomery (*pictured*) kicked the other 12 points to match the record that was set in 1964. They lost to England at Twickenham a month later.

# 1979

## PLANE CRASHES OVER ANTARCTICA

A New Zealand sightseeing plane travelling over Antarctica crashed killing all 257 on-board. It was the worst aviation tragedy in New Zealand's history.

Air travel to Antarctica in 1979 became very popular for tourists who wanted to see the continent. Five officers, who had very little experience of flying over the Antarctica, piloted the plane. That, together with poor visibility, prompted the pilots to descend below cloud cover before it crashed into the 12,444-foot Mount Erubus.

## No.1s on November 28

- 2003 Westlife: Mandy
- 1993 Meatloaf (*pictured*): I'd Do Anything For Love
- 1983 Billy Joel: Uptown Girl
- 1973 Gary Glitter: I Love You Love Me Love
- 1963 The Beatles: She Loves You



# JOIN THE STAMPEDE...



Cowboys from all over the dusty plains are heading to Smith & Western for a good ole slice of American fine dining!

## CHILDREN'S BUCKAROO MENU

Includes a main course dessert & unlimited sodas!  
Along with a ranch activity book to keep your  
Cowboys and Cowgirls entertained!

### OUR EXTENSIVE MENU INCLUDES

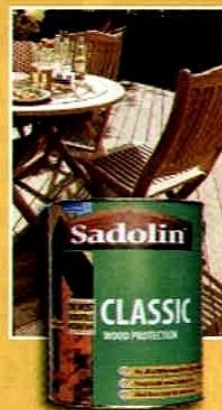
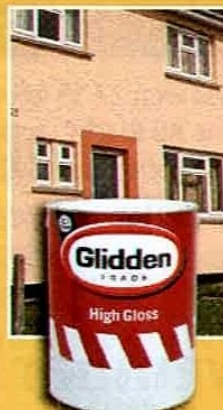
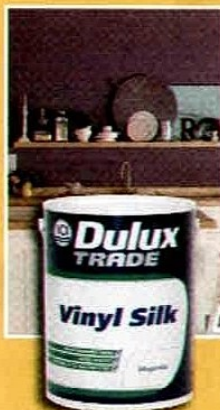
- ☆ Ice Cold Beers
- ☆ Blended Cocktails
- ☆ Appetisers
- ☆ The Best Ribs in the West
- ☆ Steaks
- ☆ Homemade Burgers
- ☆ Fajitas
- ☆ Ice Cream Sundaes

Ya'll find us open all day every day, so why not mosey on down with all the family to enjoy a taste of the wild west!



Tilgate Drive, Tilgate Park, Crawley, West Sussex RH10 5PQ Tel: 01293 560660  
[www.smith-western.co.uk](http://www.smith-western.co.uk)

# There's no substitute



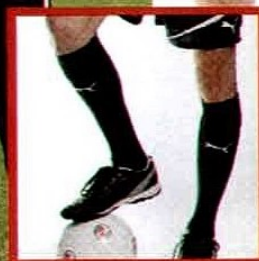
PAINTS • WOOD TREATMENTS • WALLCOVERINGS • FABRICS  
PERSONAL SERVICE • FRIENDLY HELPFUL ADVICE • FREE DELIVERY

**Brewers**  
FOR DECORATING MATERIALS

Spindle Way CRAWLEY Tel 01293 525356  
[crawley@brewers.co.uk](mailto:crawley@brewers.co.uk) [www.brewers.co.uk](http://www.brewers.co.uk)



# 50% OFF PUMA STOCK



# IN THE CLUB SHOP TODAY!

Or visit our shop in County Mall all this week  
(10am-5pm) or our mobile shop in Queen's Square  
on Dec 6-8, 13-15, 20-22 from 10am-4pm

*Offer excludes third kit*

# Reds' future UNDER-18s

**Crawley Town under-18s go into their second round FA Youth Cup tie at Woking next Wednesday knowing a victory would create a little bit of history.**

Never before have Reds reached the third round of the FA Youth Cup and if they were to beat Woking a home tie against Watford would be their reward. However, Manager Steve Martin is aware of just how tough the match at Kingfield will be.

He said: "We're not talking about the third round yet because we have to beat Woking first. We've watched Woking and we know they're a hardworking and very organised side. They will be no pushovers, especially after they beat Cambridge United 3-2 in the previous round."

Reds reached the second round following a 5-0 victory over Woodbridge Town at The Checkatrade.com Stadium earlier this month thanks to goals from Harry Anderson (2), Dan Hector,

Scott Melville and Tope Fowodu.

The attendance was over 200 and Steve was grateful for those who turned up to support the team.

"Firstly I'd like to thank the stewards, supporters and all volunteers who gave up their time to support the team," he said. "I'd also like to thank Gaffer, Taff and Martin Hinshelwood for watching the lads and delaying their journey to Bristol City with the first team."

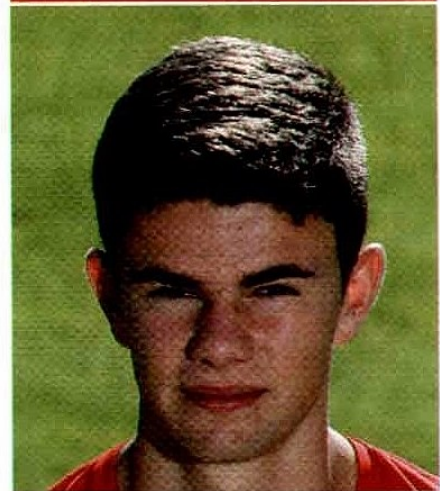
It was a victory that was expected however it was the manner of the win that pleased Steve. He added: "In terms of the performance we showed at times some quality and at times we needed to play a more positive forward pass. "We're looking forward to Woking, where we'll try and get a result."

Kick off next Wednesday is at 7pm. The under-18s have no scheduled league fixture this Saturday.

## SCOTT MELVILLE LETS FLY IN THE WIN OVER WOODBRIDGE



## Squad profile



**NAME:** Alex Read

**POSITION:** Defence

**AGE:** 16

**FROM:** Eastbourne

**BACKGROUND BEFORE**

**JOINING CRAWLEY?** I played locally in Eastbourne for Eastbourne Borough and Eastbourne Town.

**WHAT SORT OF DEFENDER WOULD YOU DESCRIBE YOURSELF AS?**

Quite calm on the ball, I like to drive the play forward from the back.

**HOW IS THE SEASON GOING SO FAR?**

It's going well now, it started very slow but we're back on track which we all believed would happen.

**WHAT DO YOU GET UP TO IN YOUR TIME OFF?**

I'm really close to my family so I like spending time with them.

**TYPICAL PRE-MATCH MEAL?**

Chicken and pasta, you get used to it but I think it tastes quite nice.

**FAVOURITE CHRISTMAS SONG?**

The one with the Irish guy in it (Shane McGowan) Fairy Tale of New York

**SUPERSTITIONS?**

I like to listen to one song every night before a game, Scientist by Coldplay. I don't know why but it helps to motivate me.

Aspire  
SUSSEX learn | enjoy | achieve

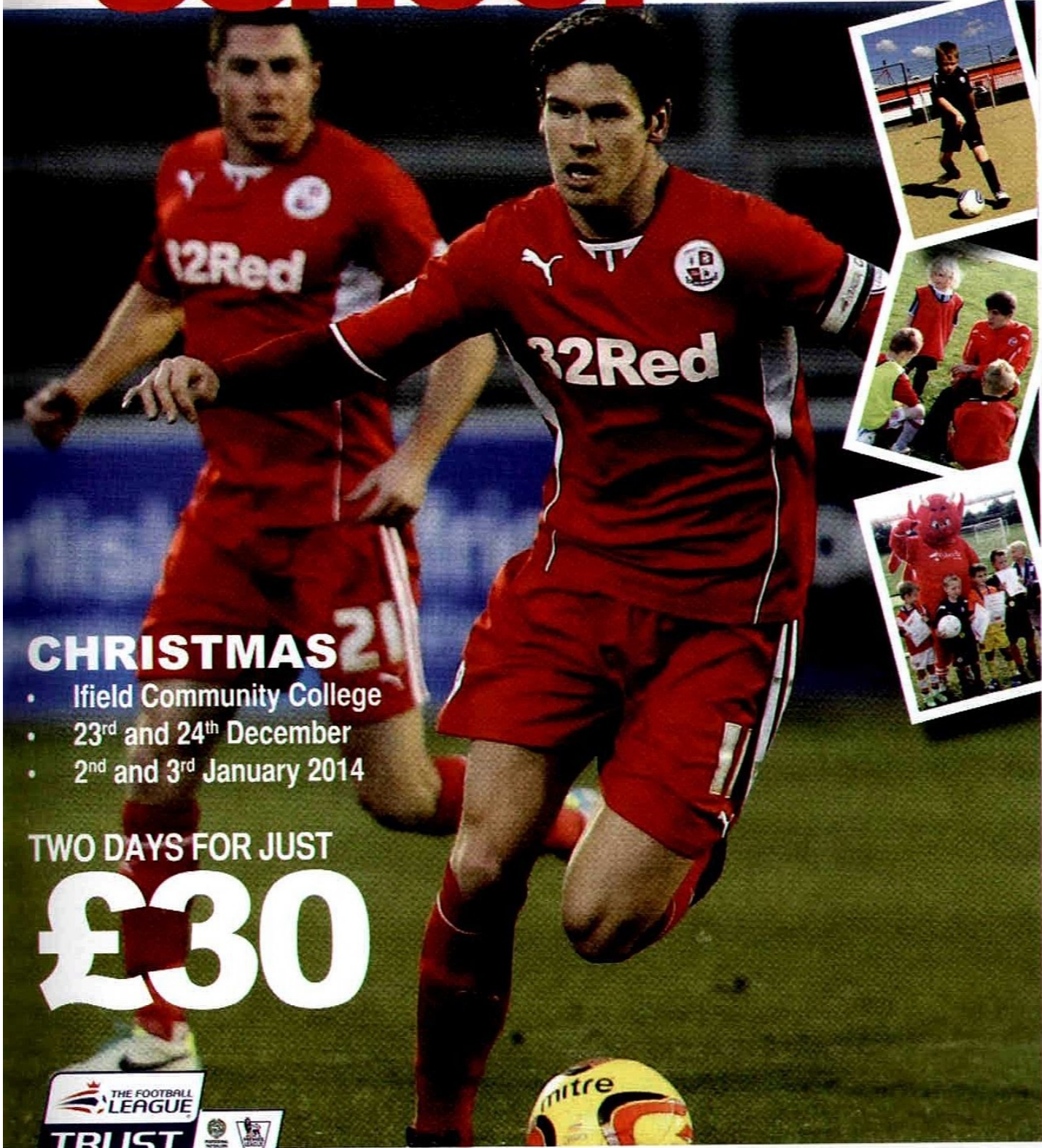
**Kick starting  
adult education  
in Crawley**

For further information please  
contact 0845 6 01 01 61 or visit  
[www.aspiresussex.org.uk](http://www.aspiresussex.org.uk)

# Soccer School



Community Sports Foundation



## CHRISTMAS

- Ifield Community College
- 23<sup>rd</sup> and 24<sup>th</sup> December
- 2<sup>nd</sup> and 3<sup>rd</sup> January 2014

TWO DAYS FOR JUST

# £30



Enquiries: [simonpearce@crawleytownfc.com](mailto:simonpearce@crawleytownfc.com) or call 01293 410 000





# Ever fancied your own internal marketing & creative department?

Marketing is an essential cog within any business that wants to grow. We understand that having an internal marketing department is complete luxury for any SME, yet a resource that would be extremely valuable.

Now that luxury can become a reality with Creative Pod. We become your internal marketing department looking after all of your marketing and creative requirements. Once we have developed a clear marketing objective and plan we have a monthly marketing meeting to outline all of the marketing activities that are to take place that month as well as any "house keeping" that needs to be actioned. That way we can ensure brand consistency, as well as continuing to spread your marketing messages month on month.

## As your internal marketing department we can look after the following for you:

- Social Media Management
- Marketing planning
- Managing 3rd party suppliers
- Search Engine Marketing
- Exhibitions
- Company newsletters
- Creative copy writing
- Social media tweets & updates
- Business development
- Email campaigns
- Google Pay Per Click
- Monthly mailers
- Website updates
- Press releases



We can become your internal marketing department from as little as 10 hours per month. Simply turn your marketing activity up by purchasing further 10 hour blocks!

T: 01293 817228 // E: [hello@creativepod.net](mailto:hello@creativepod.net) // [www.creativepod.net](http://www.creativepod.net)

# club COMMERCIAL

Both of this evening's match day sponsors have been good friends of the club for several years and it's our pleasure to welcome them to tonight's fixture.

## MATCH SPONSOR



It has always amazed me how some garages and leasing companies can make it difficult to help their customers when a vehicle is off the road. "It's simple". You just want to make one phone call and have a new car or a replacement vehicle provided whilst your problem is resolved. This is the philosophy on which Ryan was founded. Make the phone call to Ryan and our answer is always YES! Call me personally or click to find out more about our services.

*K J Murray, Managing Director*

[www.ryandfsk.co.uk](http://www.ryandfsk.co.uk)

## MATCH BALL SPONSOR



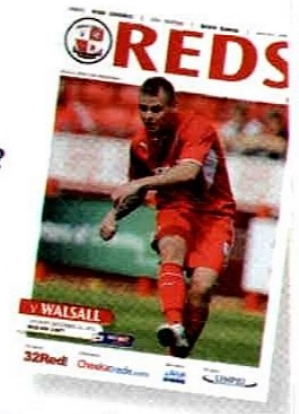
Lingfield Park is a truly outstanding resort comprising of racecourse, hotel and golf course as well as their spa and leisure facilities. All of this space also lends itself to being one of the region's top weddings and events venues. The club's partnership with Lingfield began two seasons ago and goes from strength to strength with supporters of both venues gaining access to specific race days and matches throughout the year. For more on how Lingfield Park resort can cater for your entertainment or event needs please visit

[www.lingfieldpark.co.uk](http://www.lingfieldpark.co.uk)

## HAVE YOU THOUGHT ABOUT PROGRAMME SPONSORSHIP?

Advertise your business or make someone's special day even better by sponsoring the match programme. You'll see your name on the cover of the programme, a welcome write up with picture, PA announcements and seats for the match, not to mention a signed and framed copy of your programme to keep.

**Get in touch now!**



## ADVERTISING HALF-SEASON PACKAGES

As well as some very limited spaces becoming available at Christmas we will shortly have delivered six brand new A frame advertising hoardings to match those at the South end.

- Prices start **from only £250** for the remainder of the season – that's less than £20 per match!



# player SPONSORS



**PAUL JONES**

HOME SHIRT: **S.MARKHAM**  
 AWAY SHIRT: **K & D TAYLOR**  
 SHORTS: **K & D TAYLOR**  
 LACES:  
**LEON, OSCAR & LOGAN**



**DANNIE BULMAN**



SHORTS: **BETH & OLLIE HUMPHREY**  
 LACES: **ADAM BAYLEY**



**ANDY DRURY**

HOME SHIRT: **C & M WIGHAM**  
 AWAY SHIRT: AVAILABLE  
 SHORTS: AVAILABLE  
 LACES: **ANT AND BAZ**



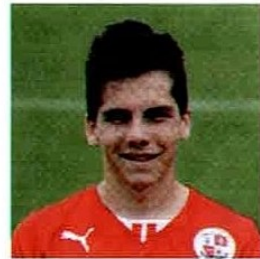
**BILLY CLARKE**

**CHARLOTTE ARMSTRONG**  
 AWAY SHIRT: AVAILABLE  
 SHORTS: **L YARNEVICH**  
 LACES: **ERIN BAYLEY**



**CONNOR ESSAM**

HOME SHIRT: AVAILABLE  
 AWAY SHIRT: AVAILABLE  
 SHORTS: AVAILABLE  
 LACES: **TOBY LOCK**



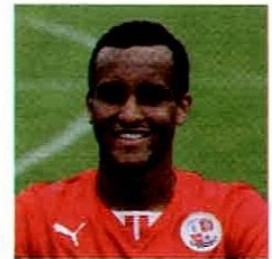
**ALEX MALINS**

HOME SHIRT: AVAILABLE  
 AWAY SHIRT: AVAILABLE  
 SHORTS: AVAILABLE  
 LACES: **ALEX & RYAN CASE**



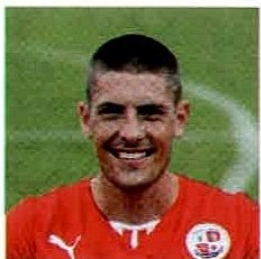
**GARY ALEXANDER**

HOME SHIRT: **CTFC FANS PETERHEAD**  
 AWAY SHIRT: AVAILABLE  
 SHORTS: **NATALIE CHIVERS**  
 LACES: **JAMES BEARD**



**JAMES HURST**

**GREEN & COOK FAMILIES**  
 AWAY SHIRT: AVAILABLE  
 SHORTS: AVAILABLE  
 LACES: AVAILABLE



**JAMIE PROCTOR**

HOME SHIRT: **SU PARRISH**  
 AWAY SHIRT: **KEVIN PARRISH**  
 SHORTS: AVAILABLE  
 LACES: **SUSAN WHEELER**



**JOE WALSH**

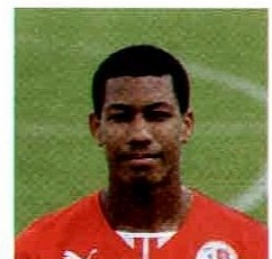
HOME SHIRT: AVAILABLE  
 AWAY SHIRT: AVAILABLE  
 SHORTS: **IAN HANDS PROGRAMMES**  
 LACES: **OLIVER LOCK**



**JONATHAN MADDISON**



SHORTS: AVAILABLE  
 LACES: **BRUCE TALBOT – LIVING THE DREAM**



**JONTE SMITH**

HOME SHIRT: AVAILABLE  
 AWAY SHIRT: AVAILABLE  
 SHORTS: AVAILABLE  
 LACES: **IAN HANDS PROGRAMMES**



**JOSH SIMPSON**

HOME SHIRT: **ASHLEIGH HILL**

AWAY SHIRT: **NICK HILL**

SHORTS: **THE GIRLS IN THE CTFC OFFICE**

LACES: **NINA BAYLEY**



**KYLE McFADZEAN**

HOME SHIRT: **M & C WIGHAM**

AWAY SHIRT: **AVAILABLE**

SHORTS: **AVAILABLE**

LACES: **MARK BEARD**



**LOUIS JOHN**

HOME SHIRT: **AVAILABLE**

AWAY SHIRT: **AVAILABLE**

SHORTS: **AVAILABLE**

LACES: **AMY & ZOE CASE**



**MARK CONNOLLY**

HOME SHIRT: **AVAILABLE**

AWAY SHIRT: **AVAILABLE**

SHORTS: **AVAILABLE**

LACES: **DAVID BEARD**

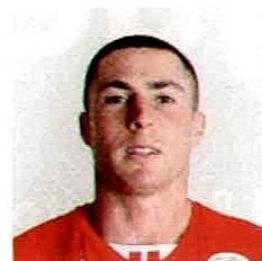


**SERGIO TORRES**



**CRAWLEY METALS**

LACES: **SUSAN WHEELER**



**MIKE JONES**



SHORTS: **AVAILABLE**

LACES: **AVAILABLE**



**NICKY ADAMS**

HOME SHIRT: **PAUL BEEDEN**

AWAY SHIRT: **NICK HILL**

SHORTS: **GARY MAGEE**

LACES: **SETH PORTHOUSE**



**MAT SADLER**



SHORTS: **JULIE NEWTON-BRADBURY**

LACES: **L, M & M THOMPSETT**



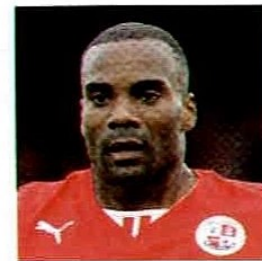
**LUKE ROONEY**

HOME SHIRT: **PAUL BEEDEN**

AWAY SHIRT: **AVAILABLE**

SHORTS: **AVAILABLE**

LACES: **LUKE MELIA**



**EMILE SINCLAIR**

HOME SHIRT: **AVAILABLE**

AWAY SHIRT: **AVAILABLE**

SHORTS: **CTFC FANS PLYMOUTH**

LACES: **ANDY STAPLEHURST**



**RICHIE BARKER**

**PRESIDENT AND VPs  
IN MEMORY OF DAVE  
HAINING**

LACES: **TEGAN GILL**



**STEVE COPPELL**

**LES & AUDREY TURNBULL**

AWAY SHIRT: **AVAILABLE**

SHORTS: **AVAILABLE**

LACES: **alisoncooper.com**

# When you need a trade don't run the risk of using a rogue

For Recommended, Vetted & Monitored Trades  
and Service Providers visit:

[www.checkatrade.com](http://www.checkatrade.com)

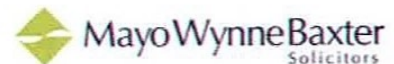
or call 0800 028 2294

**Checkatrade.com**  
Where reputation matters

At Checkatrade.com you can find trades and service providers that have built a reputation on their skills and workmanship. All our trades have been interviewed, thoroughly vetted and are continuously monitored by the most important person, you their customers. You can view their qualifications, insurance and customer comments and scores along with pictures of their previous work.

# match SPONSORS

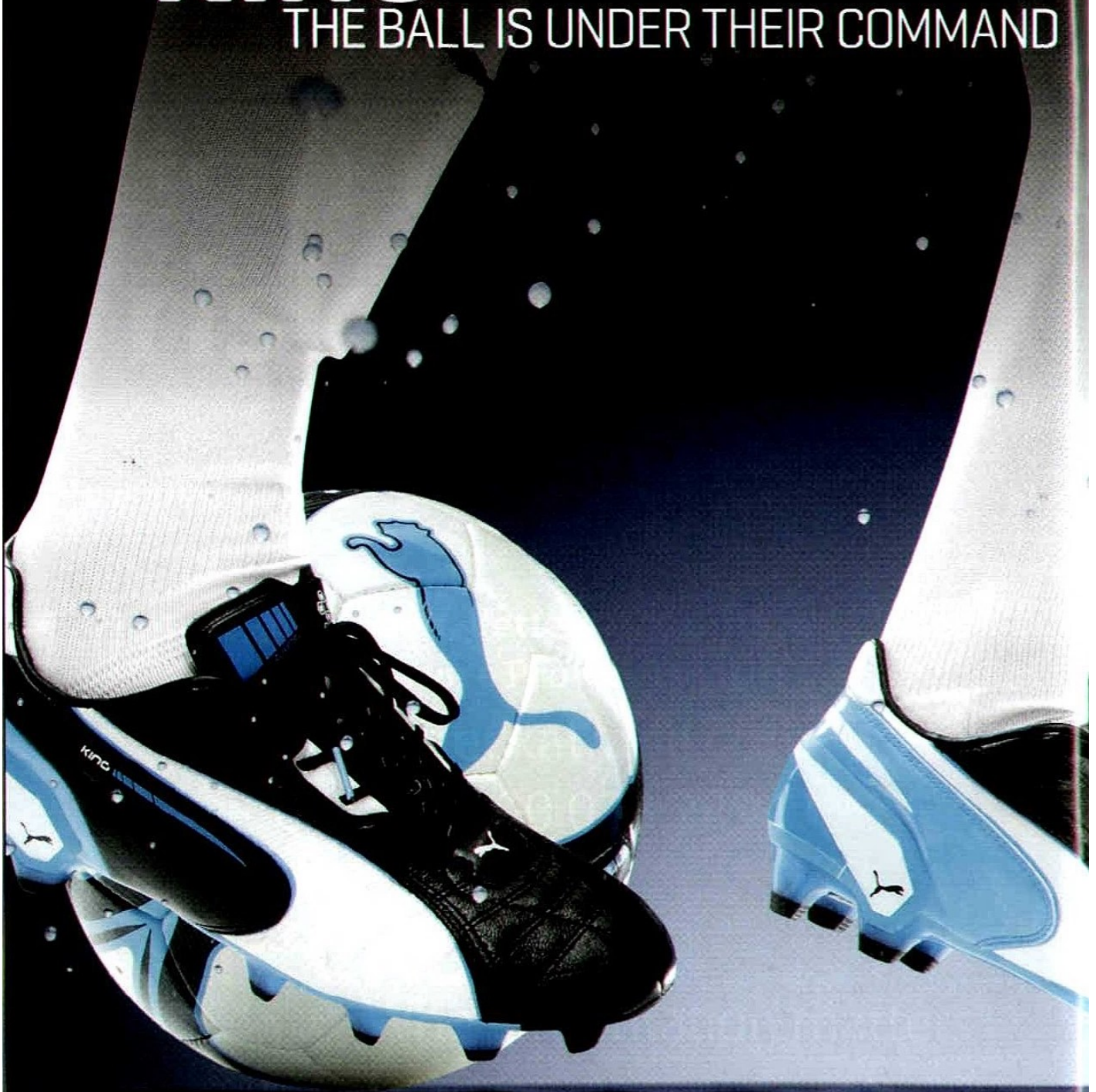
DATE	OPPONENT	SPONSOR
Sat Aug 3	Coventry	Mayo Wynne Baxter
Sat Aug 17	Rotherham	Eurovans
Sat Sep 7	Gillingham	Extech
Sat Sep 14	Shrewsbury	AJW Aviation
Sat Sep 28	Oldham	Intercleanse
Sat Oct 19	Bradford	Holiday Inn Worth
Tue Oct 22	Port Vale	Innovation F+S
Sat Nov 2	Brentford	Oakenhurst
Sat Nov 23	Walsall	London Cool
Tue Nov 26	Swindon Town	Ryan Vehicles
Sat Dec 14	Preston	KR-L
Thu Dec 26	MK Dons	Eurovans
Sun Dec 29	Notts County	Nuffield Health
Sat Jan 4	Tranmere	Brewers
Sat Jan 18	Wolves	Creative Pod
Sat Feb 1	Stevenage	Crawley Observer
Sat Feb 15	Carlisle	Checkatrade.com
Sat Mar 1	Peterborough	KR-L
Sat Mar 15	Colchester	BPE Signs
Tue Mar 25	Sheffield United	KR-L
Sat Apr 5	Crewe	Vent-Axia
Sat Apr 19	Leyton Orient	BPE Signs
Sat May 3	Bristol City	Intelligent Performance



THE NATURE OF THE

# KING

THE BALL IS UNDER THEIR COMMAND



The Nature of  
**Performance**

[puma.com/football](http://puma.com/football)



# Junior Reds

**HELLO AGAIN TO ALL JUNIOR REDS MEMBERS AND WELCOME TO TONIGHT'S BIG GAME AGAINST SWINDON!**

Were you there the night we played the Robins in the FA Cup three years ago? What a night! I remember it being very cold but we all warmed up when Matt Tubbs equalised and then, of course, we beat them in the replay and were on our way (eventually) to Old Trafford!

After tonight we only have one more home game before Christmas so it's time to start pestering your Mum and Dad about Crawley Town presents. The Club Shop is full of great gift ideas and remember we now have an outlet in Queen's Square as well which will be open Friday-Sunday throughout the run-up to Christmas!

We are still finalising arrangements for the Junior Reds Christmas party and you will be receiving your invitation and details very soon. We now have more than 600 members and I hope to see as many of you there as possible. Watch this space!

In the meantime, make some noise for the boys and

**COME ON YOU REDS!**

## Reggie x



## Mascot

Here's a picture of our mascots at the Brentford game: Kai Williams, Beth Humphrey and her brother Oliver and Tyler Boshoff. Remember, we hold a draw for each home game for a Junior Red to be a mascot so keep your fingers crossed – the next time it could be you! Tonight we welcome **Finlay Jones** as our match mascot and hope he has a great time with us!

## Competition

**WIN A SIGNED CALENDAR!**

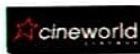
We have a copy of the 2014 official club calendar up for grabs if you can name the seven League One teams inside the grid.

Email your entry to [programme@crawleytownfc.com](mailto:programme@crawleytownfc.com) and you could be a winner! And if you don't win, remember you can still buy our brilliant calendar in the Club Shop now!

S	M	K	D	O	N	S	C
A	W	A	W	O	T	R	T
F	R	I	N	F	E	C	N
E	C	W	N	W	Y	C	E
D	K	L	E	D	E	H	I
N	S	E	V	L	O	W	R
O	L	D	H	A	M	N	O



## THALES



© 2013 The LEGO Group



# our history

## WAY BACK WHEN

### **REDS HAD SOME GOOD BATTLES WITH WELLING UNITED IN OUR SOUTHERN LEAGUE DAYS – AND OUR RECORD AGAINST THE WINGS WASN'T TOO SHABBY.**

The teams met for the first time in September 1981 when two goals from Dave Gates helped us to a 3-2 win, which Welling avenged the following February with a single-goal win.

League reconstruction meant we didn't meet again for another two years in the 1984-85 campaign, our first season in the Premier Division after promotion. Ricky Fitzgerald and Terry Robbins scored in a 2-2 draw in September 1984 and the game at Welling on December 29 finished goalless.

That season Reds finished third and only missed out on a second successive promotion by a point after finishing behind champions Cheltenham and King's Lynn. Welling were down in sixth but the following season they were head and shoulders above everyone in the league.

They won the title by a massive 23 points – that's right 23 points – after winning 29 of their 38 league games. One of those victories came on Boxing Day 1985 when Welling won 2-1 despite a goal from Terry Robbins. Welling were coasting towards the title when they arrived at Town Mead on Good Friday for the return tussle and the sides shared six goals

with Robbins – who would score a remarkable 33 league goals that season (including just one penalty) helping himself to a hat-trick.

But when the Wings visited Town Mead on this day 28 years ago in 1985 they were in for a shock as a resurgent Reds, who were in the middle of our best run of the season which would see us win four successive league games, dumped them out of the Bill Dellow Cup with a 3-0 win.

The competition was the latest reincarnation of the Southern League Cup and re-named after one its chairman. A convoluted first round had seen the teams split into groups of four and play each other twice with the winners progressing to the next stage. Reds won five of their six games in a group also containing Waterlooville, Gosport Borough and Ruislip. Welling progressed with a similar record and arrived having lost just twice in the league thus far.

Given his outstanding form in front of goal that season it was no surprise that Robbins was among the scorers. He headed home David Myers' cross to put us in front midway through the first half before midfielder Keith Browning, who was making quite an impression in his first season at the club having signed from County League East Grinstead, teed up Cliff Cant to make it 2-0. Welling fought hard to get back

into the game after the break, but Andy Coghill came forward from the back late on to seal the win with a long-range effort which beat Alan Rogers. Rogers, incidentally, was still playing County League football well into his 40s with the likes of Oakwood, Grinstead and Crowborough.

That night's programme 'Town Mead Scene' cost 25p and carried a stern warning to supporters in response to allegations of racist chanting in the previous game at home to Fisher Athletic. 'We know who these people are and in future they will be banned and their names printed in the programme.' It is hard not to ask the question why they weren't banned straight away or what would be served by printing their names in the programme if they were not allowed in the ground? These days, of course, there is a zero tolerance approach to racism by clubs. Back in the mid-80s thinking was less enlightened.

Bromsgrove went on to win the Bill Dellow Cup while Reds, who scored more league goals than any other side apart from Welling, finished sixth.

**DAVID MYERS SET UP  
TERRY ROBBINS FOR THE  
OPENING GOAL**



## Town whip leaders

CRAWLEY Town, inspired by a brilliant mid-field performance moved easily into the third round of the Southern League Bill Dellow Cup beating top of the table Welling United 3-0 at Townmead last night.

Town gave scant regard for United's high scoring reputation and were always in command of a fiercely competitive cup tie, played in the true spirit.

Town went ahead in the 25th minute when a Dave Myers cross to the far post was headed powerfully home by top scorer Terry Robbins.

Right on the stroke of half time midfielder Keith Browning won a vital ball in midfield, battling his way past two defenders before knocking square to Cliff Cant who fired low from just outside the penalty box.

Welling came back strongly in the second half and laid seige to Crawley's goal for the first 20 minutes

With nine minutes remaining defender Andy Coghill forced his way through the Welling midfield and his shot from 35 yards slipped through the fingers of keeper Alan Rogers.

## EDITOR'S NOTES

Good evening everyone...

... And a big welcome to the Officials, Players and Supporters of Welling United for this evening's Second Round match in the Bill Dellow Cup. At the moment Welling are at the top of the Premier Division, having only lost 2 of their 12 matches played. They qualified for the Second Round of the Bill Dellow Cup by winning Group 5 (winning 5 out of 6 matches). They include in their team John Bartley, the leading goalscorer in the Premier Division.

Last Wednesday we were at Fleet Town in the Southern Counties Combination Floodlight Cup. This was a match in which we ran out easy winners by 6 goals to Nil (our goalscorers being Andy Coghill, 2, Gary Juliara, 2, Alan Lester and Jeff Wood.

Last Saturday we beat Fisher Athletic 1 - 0 at home (the first time that we have beaten them). This was a very good match to watch with the result in doubt right up to the end of the match, our goal being scored by new signing Giles Stille.

Enjoy tonight's match

### IMPORTANT NOTICE

IT HAS COME TO THE NOTICE OF THE FOOTBALL CLUB THAT CERTAIN SO-CALLED SUPPORTERS WERE USING FOUL AND ABUSIVE LANGUAGE AND ALSO MAKING RACIST REMARKS DURING LAST SATURDAY'S MATCH WITH FISHER ATHLETIC. WE KNOW WHO THESE PEOPLE ARE ANYBODY NOW FOUND MAKING THESE REMARKS WILL BE BANNED FROM THE GROUND AND THEIR NAMES PRINTED IN THE PROGRAMME. WE DO NOT WANT THIS TYPE OF PEOPLE AS SUPPORTERS YOU HAVE BEEN WARNED

### NEXT AT HOME

SEE LOCAL PRESS FOR DETAILS

TONIGHT'S MATCH BALL HAS BEEN DONATED BY WILLIAM YOUNGER'S (TRY THEIR BEERS IN THE CLUBHOUSE AFTER TONIGHT'S MATCH)

TUESDAY  
26 NOVEMBER 1985  
KICK-OFF 7.30 P.M. 25p

**TOWN MEAD SCENE**

**CRAWLEY TOWN** **V** **WELLING UNITED**  
BILL DELLOW CUP - SECOND ROUND

# COMPLETE aircraft spares support

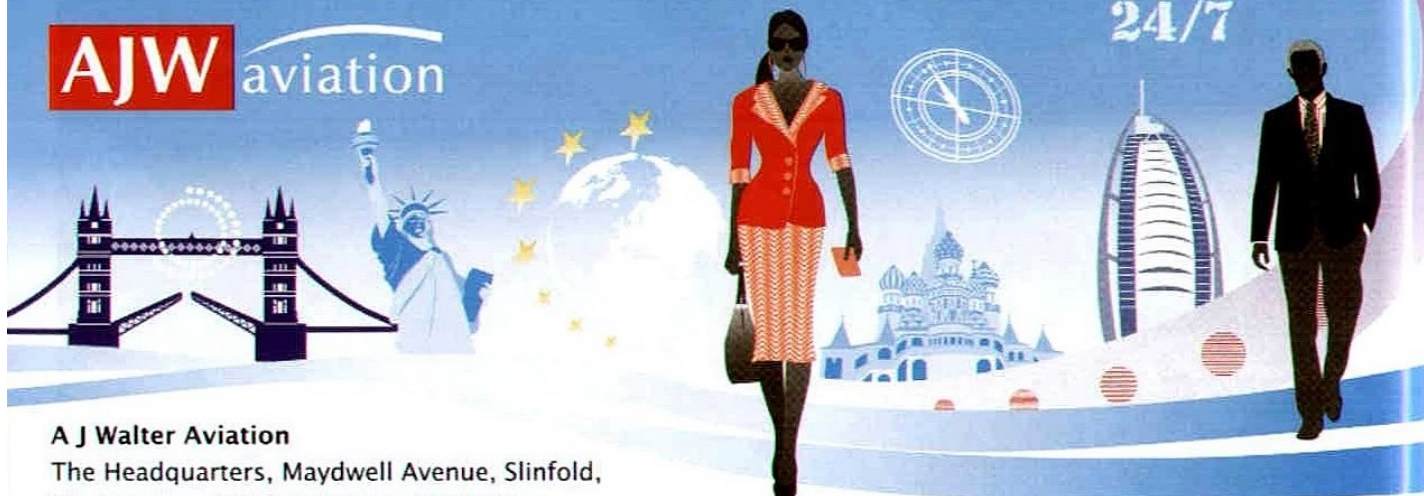
A J Walter Aviation is a world leading specialist in the supply of commercial aircraft spare parts.

Based in a new prestigious HQ at Slinfold, West Sussex we employ over 300 staff in 30 countries and work with more than 800 airlines worldwide.

We are keen supporters of local charities and projects, within our communities.

**AJW** aviation

24/7



## A J Walter Aviation

The Headquarters, Maydwell Avenue, Slinfold,  
West Sussex, RH13 0SH United Kingdom  
tel: +44 1403 711777 email: sales@ajw-aviation.com  
www.ajw-aviation.com

Proud sponsors of Crawley Town FC 2012-2013 season

80 YEARS  
1932  
2012  
in aviation



## Proud to support Crawley Town FC

All organisations are reliant on well-managed IT services, however many cannot afford or warrant a full-time IT person. So, if you are not ready for a full time IT employee and are struggling with any of the following, then Extech is your answer:

- Spending too much time on IT
- Keeping IT costs under control
- Aligning IT to the business
- Electing the right IT solutions
- Maintaining IT security
- Defining your Cloud strategy



Follow us on Twitter to win a signed framed shirt!  
Search @Extechuk

SAP Business One

Microsoft Partner  
Gold Midmarket Solution Provider



extech.co.uk  
Managed IT Solutions for your Business

T: 01444 443200

sales@extech.co.uk

www.extech.co.uk

# showing our support **WHITE RIBBON DAY**



**CRAWLEY TOWN FC IS BACKING SUSSEX POLICE'S DOMESTIC ABUSE CAMPAIGN AND IS ENCOURAGING REDS SUPPORTERS TO SHOW THEIR COMMITMENT IN HELPING TO ELIMINATE VIOLENCE AND ABUSE IN OUR SOCIETY.**



On average, 40 reports of domestic abuse are reported to Sussex Police each day. The true picture will be much higher as often the abuse goes on 'behind closed doors' and the reasons for not reporting are undoubtedly complicated.

Yesterday (November 25), White Ribbon Day, Sussex Police launched their campaign which is aimed at encouraging victims to report incidents earlier before the abuse escalates and raising awareness of White Ribbon UK, a national organisation working to involve men in opposing violence and abuse against women.

Sussex Police was the first police force in England to be awarded White Ribbon status in recognition of the work being done to tackle domestic abuse and is committed to supporting the aims of the White Ribbon Campaign: never to commit, condone or remain silent about violence against women, helping and supporting EVERYONE who is experiencing domestic abuse.

As part of the club's support for White Ribbon Day, the players will be wearing white ribbons during tonight's warm-up and Richie and his management team will be wearing them throughout the game.

## **HOW YOU CAN HELP**

The White Ribbon is a symbol of hope for a world where people can live free from the fear of

violence and abuse. By wearing a White Ribbon pin badge, you can show your support in challenging the acceptability of violence by becoming involved in challenging attitudes and behaviour, and helping women to break the silence. Visit [www.whiteribboncampaign.co.uk](http://www.whiteribboncampaign.co.uk) to pledge your support and to find out more details.

## **TALK TO US – WE CAN HELP**

If you are in a relationship where you feel frightened, or if controlling, abusive or violent behaviour has become part of the relationship, Sussex Police has specially trained officers who can help.

## **FOR ADVICE AND SUPPORT VISIT**

- [www.sussex.police.uk](http://www.sussex.police.uk)  
Call 101 or 01273 470101  
If you don't want to talk to the police, talk to someone. These organisations can also help...
- 24 hour National Domestic Violence Helpline  
0808 2000 247
- [www.nationaldomesticviolencehelpline.org.uk](http://www.nationaldomesticviolencehelpline.org.uk)  
WORTH 0330 222 8181
- [www.worthservices.org](http://www.worthservices.org)
- Brighton & Hove - RISE  
01273622822  
[www.Riseuk.org.uk](http://www.Riseuk.org.uk)
- East Sussex Domestic Abuse Service 0844 225 0657

# Olivers



[www.oliverswinewarehouse.co.uk](http://www.oliverswinewarehouse.co.uk)



**5%**  
**DISCOUNT**  
**WITH**  
**YOUR**  
**CTFC**  
**TICKET**

## Best wishes to the Red Devils for the new season



**Lizzie's**  
[www.lizziescakesdirect.co.uk](http://www.lizziescakesdirect.co.uk)

**Pies &  
Cakes**

# away from home

# REDS ON THE ROAD

**30.11.13**  
**Crewe**  
**Alexandra**

**REDS MAKE THE TRIP UP TO GRESTY ROAD NEXT SATURDAY LOOKING FOR OUR FIRST WIN ON CREWE SOIL. HERE'S ALL THE INFORMATION YOU NEED TO KNOW IF YOU'RE MAKING THE TRIP.**

## HOW TO GET THERE

**Car:** Head northbound on the M23, taking the exit at junction 8 towards M25 Heathrow. At junction 16, take the exit onto the M40 towards Birmingham and Oxford. At junction 3A, exit onto the M42 towards M1/M6. Continue onto the M6 Toll and merge onto the M6. At junction 16 take the A500 exit to Nantwich and Crewe. At the first roundabout take the first exit, go through a further two roundabouts before taking another 1st exit onto the B5071. Gresty Road will be on the right.

**Train:** The train station is just a few minutes away from Gresty Road and services run fairly frequently between Crawley and Crewe stations, with only two changes required. The 09:59 departing from Crawley will get you there in plenty of time. Change at Victoria, get the tube to London Euston and you can



get the service from Euston to Crewe, arriving in Crewe at 13:10. The return leaving 17:29 gets in at 20:48 and the 17:49 gets to Crawley at 21:39.

## Crawley Town Supporters Alliance

The coach departs The Checktrade.com Stadium at 7:30am and is priced at £20 for members and £25 for non-members. If you wish to travel, text 07843124845 or e-mail [travel@ctfcsa.co.uk](mailto:travel@ctfcsa.co.uk)

## TICKETS

- Adults - £21;
- Seniors (60+) - £16.50;
- 12-16 Years - £10.50;
- Under 11 - £6.00;
- Registered Disabled - £16.50 + Free Carer

Tickets are for the North Stand and will also be on sale on matchday.

## PARKING

There is parking available on the day at the ground for £3.50.

## GRUB IN THE GROUND

Many other fast food, sandwich and pie outlets are situated in the surrounding area, offering possibly the best choice in England so close to a football ground. The usual stadium food is available inside Gresty Road.

## WHERE TO DRINK?

Often the supporters club at the ground lets a small number of away fans in and the Royal Hotel is just a few minutes' walk from the ground and welcomes away fans.



**Ladbrokes**



LINGFIELD  
PARK

RESORT

**ALL-WEATHER  
CHAMPIONSHIPS**  
EVERY RACE COUNTS!

LINGFIELD  
PARK RESORT  
HOME OF THE  
ALL-WEATHER  
CHAMPIONSHIPS  
FINALS DAY



★ ★ ★  
**SUPER  
SPORTING  
SATURDAYS**

RACING ■ RUGBY ■ FOOTBALL



TICKETS  
ONLY  
**£15\***

**Watch the action live at Lingfield Park**



Enjoy an afternoon following the latest sporting action!

**ALL SATURDAY RACEDAYS FROM 4 JANUARY UNTIL 1 MARCH**

Premier Admission Ticket | £2 Discounted Ladbrokes bet | Raceday Programme

[www.lingfieldpark.co.uk](http://www.lingfieldpark.co.uk)

01342 834800 | [info@lingfieldpark.co.uk](mailto:info@lingfieldpark.co.uk)

\*Terms & conditions apply. Advance bookings only. Price per person and includes VAT. For race times and for full details of the sporting fixtures shown please visit our website.

# coming up JUST THE TICKET

## MATCHDAY TICKETS

(from 3 hours before kick-off)

STAND	WEST	EAST	TERRACE
Adults	£25	£22	£20
Over-65s	£21	£18	£16
18s and under	£16	£13	£10

## TICKETS PURCHASED PRIOR TO MATCH DAY

STAND	WEST	EAST	TERRACE
Adults	£22	£19	£17
Over-65s	£18	£15	£13
18s and under	£13	£10	£7

## HOW TO BOOK

- Call 01293 410000
- Visit the Ticket Office (Mon-Fri 9.30am-5pm and from 9am on matchdays)
- The Ticket Office is also open until 7pm on the day before a home match.
- Online: [www.crawleytownfc.com/tickets](http://www.crawleytownfc.com/tickets)

## HOME



**SATURDAY, DECEMBER 14, KICK OFF 3PM**  
**SKY BET LEAGUE ONE V PRESTON NORTH END**

East Stand tickets will cost the same price (£17) as terrace tickets for this game.



## ADVANCED TICKET INFORMATION

**SATURDAY, JANUARY 15, 2014, KICK OFF 3PM**

**SKY BET LEAGUE ONE V WOLVERHAMPTON WANDERERS**

**THIS WILL BE AN ALL-TICKET FIXTURE.** There will be a priority sales window for anyone who has purchased a home ticket this season, and is therefore on our database, and for all Junior Reds members who do not have a season ticket. You must be registered on our database. Only one ticket per person can be purchased. The sales window opens at 10am on Sunday, December 8 and closes at 7pm on Friday, December 13, after which tickets go on general sale.

## AWAY



**SATURDAY, NOVEMBER 30, KICK OFF 3PM**  
**SKY BET LEAGUE ONE V CREWE ALEXANDRA**

- Adults - £21;
- Seniors (60+) - £16.50;
- 12-16 Years - £10.50;
- Under 11 - £6.00;
- Registered Disabled - £16.50 + Free Carer

Tickets are for the North Stand and will also be on sale on matchday.



**SATURDAY DECEMBER 7, KICK OFF 3PM**

**FA CUP 2ND ROUND WITH BUDWEISER V BRISTOL ROVERS**

- Adults: £12
  - Concessions: £7
  - Under 16: (with paying adult) £1
- Please check website but this is likely to be pay on the day.

**Download your match day programme to your iPad**

@ [www.matchdaydigital.co.uk](http://www.matchdaydigital.co.uk)





CELEBRATING



YEARS OF  
THE FOOTBALL LEAGUE

- 1895 Peter Shilton becomes first player to make 1000 league appearances
- 1898 Automatic promotion & relegation introduced
- 1907 Maximum wage introduced
- 1914 Footballers' Battalion formed
- 1920 Football League expands to 66 clubs and introduces a Third division
- 1921 Expanded to 88 clubs with 3rd Division North & South
- 1925 New offside law introduced
- 1927 BBC broadcast first live football league match on the radio
- 1939 League suspended due to World War II
- 1949 Record attendances of 4.1 million
- 1957 White ball used for the first time in matches
- 1958 Division 3 & 4 formed to replace regional 3rd Division
- 1958 First football game Portsmouth v. Newcastle United
- 1960 First ever live Football League match shown on television
- 1961 Maximum wage abolished
- 1965 Keith Peacock becomes first Football League substitute
- 1966 Substitutions for any reason permitted
- 1974 The first ever Football League match played on a Sunday
- 1976 Goal difference replaces goal average
- 1981 3 points for a win introduced
- 1983 Canon become first sponsor of The Football League
- 1986 Football League Play-Offs introduced
- 1987 2 substitutes per team introduced
- 1988 The World's original league formed
- 1891 Goal kicks and penalty kicks were introduced
- 1892 2nd Division introduced
- 2009 Social media presence launched
- 2012 Financial Fair Play introduced
- 2004 Divisions renamed Championship, League 1 and League 2



Find out more at:

[FL125.CO.UK](http://FL125.CO.UK)

# away from home

## REDS ON THE ROAD

**07.12.13**  
**Bristol Rovers**

**IT'S BACK TO THE FA CUP ON SATURDAY WEEK AS REDS GO TO THE MEMORIAL GROUND TO FACE LEAGUE 2 BRISTOL ROVERS IN THE SECOND ROUND. HERE'S ALL YOU NEED TO KNOW IF YOU ARE PLANNING TO GO.**

### HOW TO GET THERE

**Car:** M23 north, M25 west and then pick up the M4 westbound to junction 19 and join the M32. Travel along the M32 for 3.1 miles until you reach junction 2. Here, exit the motorway and take the third exit signposted Horfield and Southmead and follow the road which have clear signs to The Memorial Stadium. Once through this area you join Muller Road and you should continue for 1.4 miles until you come to signal-controlled crossroads. Signposted right is Horfield Health Centre and Library. At this junction ignore the sign and turn left into Filton Avenue where the ground is located almost immediately on the left.

**Train:** The 10:48 from Three Bridges gets you to Bristol Temple Meads at 13:42 and involves changing at Gatwick Airport and Reading. The 09:57 arrives at 13:14 but you will have to cross London from Victoria to



Paddington for this service.

Coming back, the 17:30 gets back to Three Bridges at 20:44 via Reading and Gatwick Airport and the 18:00 via the same route get into Three Bridges at 21:03. You will need to get a taxi from Temple Meads or get a local train to Bristol Filton Wood, which is approx. 20 minutes on foot.

**CTSA:** Supporters Alliance coaches leave The Checktrade.com Stadium at 9.30am. Cost is £20 (£25 non-members). See page 24 for how to book.

### TICKETS

- Adults £12
- Concessions £7
- Under-16s £1 (if accompanied by paying adult)

There are no advance tickets for this game. It is pay on the day. Reds fans will either be in the South Stand (seating behind goal) or East Stand (terrace).

### PARKING

Street parking in the immediate vicinity of the stadium is not advised. Instead look for a spot 5-10 minutes on foot in Muller Road or Gloucester Road.

### GRUB IN THE GROUND

The Cornish pasties which cost £2.50 and include a vegetarian option are highly recommended, along with the Chicken Balti pies. Away from the ground, the Bristol Fryer near the Quarington Road junction and the Big Bite Cafe on Ashley Down Road are recommended.

### WHERE TO DRINK?

No shortage of pubs around the Memorial Stadium. The Wellington, The Anchor, The Foresters and The Ashley Arms all welcome away fans.

✓ Please recycle



**paper &  
card**



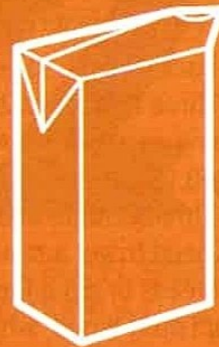
**foil**



**plastic  
bottles**



**metal cans  
& aerosols**



**cartons**



**glass bottles  
& jars**

**X** No plastic bags, food or any other rubbish

Contact 01243 642106 for more information & advice.  
[www.recycleforwestsussex.org](http://www.recycleforwestsussex.org)



# man on the mic **JOHN BARNETT**

**JOHN BARNETT  
COMMENTATES ON  
ALL OUR GAMES FOR  
REDS PLAYER, WHICH  
PROVIDES COMMENTARY  
ON EVERY REDS' MATCH  
HOME AND AWAY.**



**ALTHOUGH TONIGHT'S OPPONENTS HAVE BEEN HERE TWICE BEFORE IN LEAGUE ACTION, OUR FIRST EVER MEETING THREE YEARS AGO WILL ALWAYS LIVE LONG IN THE MEMORY OF REDS' FANS.**

To set the scene, it was only the fourth time we had made the second round proper of the FA Cup and a few weeks earlier had seen our first victory in the competition for seven years. Despite being exempt until the final qualifying round (as a Conference club) for the previous six seasons we had somehow failed to progress to the first round proper in that time.

In addition we had only ever defeated one Football League side, Northampton Town, way back in November 1991, en route to our only previous appearance in the third round. So it was certainly unfamiliar territory.

I was unable to attend the match, which had been brought forward to the Friday night as it was to be screened by ESPN, making it

our first televised FA Cup tie. So yours truly had to pay an extra subscription in order to be able to watch Reds – how strange did that sound? (Subscribing to watch, not me paying out although some people might think both equally unlikely).

Seeing The Checktrade.com Stadium (the Broadfield Stadium as it was then) from my lounge was another novel experience, but with the cameras behind the old East Terrace, the packed West Stand provided an excellent backdrop. The game itself saw the Robins dominate the first half but the home side hit back with a strong second-half performance, raising the tempo and having their more illustrious opponents rattled.

It was something of a surprise when the League One side took the lead through Charlie Austin. However, ten minutes later our own goal-machine Matt Tubbs levelled things up with a great finish and it ended 1-1. Two days later, the third round draw provided a tasty carrot in the form of Championship club Derby County at home.

So, it was off to the County Ground 11 days later at the start one of the coldest and snow-filled winters I have ever known. That the match went ahead was a surprise. Pulling into the car park at 6pm it was already -2 degrees and the surrounding hedges were white with frost. It was not looking good. Fortunately the pitch had

been covered, but as soon as the coverings were removed it started to refreeze.

What followed has since gone down in Crawley Town folklore. An early lead through Ben Smith was deserved, but we harshly went in at the break 2-1 down courtesy of Jon-Paul McGovern and Austin again. However, our cause was helped by the dismissal of the hosts' Jonathan Douglas. The second period was all Crawley yet it looked like one of our former players would deny us as Phil Smith performed heroics in the Swindon goal. Finally, some luck went our way as, ironically, Smith fumbled Glenn Wilson's low cross into the net.

Despite sustained pressure, we were unable to score a winner in normal time so with the pitch freezing with each minute that passed it was into extra-time. It looked like it would require penalties until Ben Smith popped up with his second of the match two minutes from the end, sparking scenes of absolute jubilation amongst the travelling Red Army. We had finally reached the third round for a second time and at last we had claimed a second League scalp.

History will show that the home tie with Derby, which ESPN also showed live, was pretty exciting, but for me that freezing night in Wiltshire was when where Crawley Town's love affair with the competition was ignited.

# Supporting the grassroots



**Football**   
**Foundation**



— ■ FUNDING PARTNERS ■ —

[www.footballfoundation.org.uk](http://www.footballfoundation.org.uk)  
[@FootballFoundtn](https://twitter.com/FootballFoundtn)

*improving facilities • creating opportunities • building communities*

Charity No 1079309 Company No 3876305

# Appearances, goals 13/14

## LEAGUE TABLE



	League		Cup		Season		Career	
	App	Gls	App	Gls	App	Gls	App	Gls
Nicky Adams	16	0	3	2	19	2	70+2	12
Gary Alexander	5+9	2	1+2	1	6+11	3	49+15	15
Kyle Bennett	4	0	0	0	4	0	4	0
Dannie Bulman	14+1	0	2+1	0	16+2	0	274+20	17
Billy Clarke	10+1	5	0+1	0	10+2	5	61+12	22
Mark Connolly	6+3	0	2	0	8+3	0	40+11	2
Andy Drury	15+2	1	1+2	0	16+4	1	31+4	5
Connor Essam	0+2	0	1	0	1+2	0	9+3	1
James Hurst	8+6	0	3	0	11+6	0	11+6	0
Louis John	0	0	0	0	0	0	0	0
Michael Jones	15+1	1	3	1	18+1	2	57+7	3
Paul Jones	17	0	3	0	20	0	74	0
Johnny Maddison	0	0	0	0	0	0	0	0
Alex Malins	0	0	0	0	0	0	0	0
Kyle McFadzean	15+1	1	1+1	0	16+2	1	123+6	10
Jamie Proctor	10+7	2	3	1	13+7	2	28+10	9
Luke Rooney	0+4	0	0+1	0	0+5	0	0+5	0
Mat Sadler	17	1	3	0	20	1	71+1	3
Josh Simpson	16	0	3	0	19	0	112+22	11
Jonte Smith	0	0	0	0	0	0	0+4	0
Emile Sinclair	6+5	2	1+1	2	7+6	4	7+6	4
Sergio Torres	0+6	0	1	0	1+6	0	98+32	10
Joe Walsh	13	4	2	0	15	4	47+3	7

### Season 2013/2014

Last updated 24 Nov 13

	PLD	HOME					AWAY					GD	PTS
		W	D	L	F	A	W	D	L	F	A		
1 Leyton Orient	17	6	1	1	17	6	7	1	1	22	8	+25	41
2 Wolves	17	6	2	1	16	5	6	2	0	14	5	+20	40
3 Peterborough	17	5	1	3	9	8	5	1	2	16	7	+10	32
4 Brentford	17	5	1	2	13	5	4	3	2	12	12	+8	31
5 Preston North End	17	3	5	1	13	10	5	2	1	12	7	+8	31
6 Bradford	17	4	2	2	18	9	3	4	2	12	10	+11	27
7 Swindon	17	6	1	2	21	12	2	1	5	11	12	+8	26
8 Walsall	17	3	2	3	9	10	4	3	2	10	5	+4	26
9 Port Vale	17	4	2	2	13	11	4	0	5	13	15	0	26
10 Rotherham	17	2	5	2	11	13	4	2	2	13	9	+2	25
11 Milton Keynes Dons	16	5	2	2	17	11	1	2	4	9	12	+3	22
12 Coventry	17	6	1	2	23	19	3	3	2	15	11	+8	21
13 <b>Crawley Town</b>	17	4	2	3	18	11	1	4	3	9	12	-4	21
14 Shrewsbury	17	4	4	1	11	5	0	3	5	6	14	-2	19
15 Oldham	16	3	2	2	8	6	2	1	6	12	17	-3	18
16 Gillingham	17	3	2	4	9	10	2	1	5	11	16	-6	18
17 Colchester	17	2	3	3	7	10	1	6	2	10	13	-6	18
18 Carlisle	17	2	2	4	9	18	2	4	3	7	10	-12	18
19 Tranmere	17	1	3	4	10	20	3	2	4	11	11	-10	17
20 Stevenage	17	2	1	5	9	14	3	1	5	7	12	-10	17
21 Sheff Utd	17	3	2	3	10	9	1	1	7	5	16	-10	15
22 Bristol City	17	1	4	4	9	13	1	4	3	15	16	-5	14
23 Crewe	17	2	3	4	9	17	1	1	6	4	21	-25	13
24 Notts County	17	3	0	5	11	10	0	1	8	6	21	-14	10

Data for Sky Bet League 1 provided by Press Association

# 2013-14 FIXTURES

				PAUL JONES (GK)	MIKE JONES	NICKY ADAMS	DANNIE BULMAN	JAMIE PROCTOR	JOE WALSH	JOSH SIMPSON	ANDY DRURY	GARY ALEXANDER
AUGUST	Sat 3	Coventry City	H 3-2	Δ	Δ1	Δ	Δ	Δ1	Δ1	Δ	◇	Δ
	Tue 6	Cheltenham	A 3-4	Δ	Δ	Δ2	Δ	Δ	Δ	Δ	◇	Δ
	Sat 10	Tranmere Rovers	A 3-3	Δ	Δ	Δ	◇	Δ	Δ2	Δ	Δ	◇
	Sat 17	Rotherham United	H 1-2	Δ	Δ	Δ	◇	Δ	◇	Δ	Δ	◇
	Fri 23	Wolverhampton	A 1-2	Δ	Δ	Δ	Δ	◇	Δ	Δ	Δ	Δ
SEPTEMBER	Sat 31	Peterborough United	A 2-0	Δ	Δ	Δ	Δ	◇	Δ	Δ	Δ	Δ
	Sat 7	Gillingham	H 3-2	Δ		Δ	Δ	◇		Δ	Δ	Δ
	Sat 14	Shrewsbury Town	H 1-1	Δ	◇	Δ	Δ	Δ	◇	Δ	Δ1	
OCTOBER	Sat 21	Colchester United	A 1-1	Δ	Δ	Δ	Δ	◇	Δ	Δ	Δ	
	Sat 28	Oldham Athletic	H 1-0	Δ	Δ	Δ	Δ	◇	Δ1	Δ	Δ	
	Fri 4	Sheffield United	A 1-1	Δ	Δ	Δ	Δ	Δ1	Δ	Δ	Δ	◇
	Tue 8	Newport County	H 2-3	Δ	Δ1	Δ	◇	Δ		Δ	◇	◇
	Sat 19	Bradford City	H 1-0	Δ	Δ	Δ	Δ	Δ	Δ	Δ	Δ	◇
NOVEMBER	Tue 22	Port Vale	H 0-3	Δ	Δ	Δ	Δ	Δ	Δ	Δ	Δ	◇
	Sat 26	Stevenage	A 0-2	Δ	Δ	Δ	Δ	◇	Δ	Δ	Δ	Δ
	Sat 2	Brentford	H 0-1	Δ	Δ	Δ	Δ	Δ	Δ	Δ	Δ	◇
	Tue 5	Bristol City	A 0-2	Δ	Δ	Δ	◇	Δ	Δ	Δ	◇	◇
	Sat 9	Hednesford	A 2-1 <sup>(10g)</sup>	Δ	Δ	Δ	Δ	Δ	Δ	Δ	Δ	◇
	Sat 16	Carlisle United	A 1-1	Δ	Δ		Δ	◇	Δ	Δ	Δ	◇
	Sat 23	Walsall	H 0-0	Δ	Δ	Δ	Δ	Δ	◇	◇	Δ	◇
DECEMBER	Tue 26	Swindon Town	H FL1									
	Sat 30	Crewe Alexandra	A FL1									
	Sat 7	Bristol Rovers	A FAC2									
	Sat 14	Preston North End	H FL1									
	Sat 21	Leyton Orient	A FL1									
	Thu 26	MK Dons	H FL1									
	Sun 29	Notts County	H FL1									
JANUARY 2014	Wed 1	Swindon Town	A FL1									
	Sat 4	Tranmere Rovers	H FL1									
	Sun 12	Coventry City	A FL1									
	Sat 18	Wolverhampton	H FL1									
	Sat 25	Rotherham United	A FL1									
	Tue 28	Port Vale	A FL1									
FEBRUARY	Sat 1	Stevenage	H FL1									
	Sat 8	Brentford	A FL1									
	Sat 15	Carlisle United	H FL1									
	Sat 22	Walsall	A FL1									
MARCH	Sat 1	Peterborough	H FL1									
	Sat 8	Gillingham	A FL1									
	Tue 11	Shrewsbury Town	A FL1									
	Sat 15	Colchester United	H FL1									
	Sat 22	Oldham Athletic	A FL1									
	Tue 25	Sheffield United	H FL1									
APRIL	Sat 29	Preston North End	A FL1									
	Sat 5	Crewe Alexandra	H FL1									
	Sat 12	MK Dons	A FL1									
	Fri 18	Leyton Orient	H FL1									
	Mon 21	Notts County	A FL1									
MAY	Sat 26	Bradford City	A FL1									
	Sat 3	Bristol City	H FL1									

**SATURDAY GAMES KICK OFF**  
**3pm MIDWEEK 7.45PM**

Key: FL1: Sky Bet Football League One,  
 COC: Capital One Cup, FAC: FA Cup,  
 JPT: Johnstone's Paint Trophy

△ Played ◇ Sub ◇ Unused sub

	BILLY CLARKE	CONNOR ESSAM	KYLE MCFADZEAN	MARK CONNOLLY	MAT SADLER	JAMES HURST	ALEX MALINS	JONTE SMITH	LOUIS JOHN	EMILE SINCLAIR	LUKE ROONEY	JONATHAN MADDISON (GK)	KYLE BENNETT	Att.	Away
		◇	△	◇	△	△						◇		3454	1080
	◇	◇	△	◇	△	△					◇	◇		1562	117
	△	◇	◇	△	△	△					◇	◇		4763	125
	△	◇	△	△	△1	△					◇	◇		3110	509
	△1	◇	△	◇	△	◇					◇	◇		17006	246
	△		△	◇	△	◇				◇	◇	◇		6761	231
	△2	◇	△1	△	△	△				◇	◇	◇		3984	998
	△	◇	△	△	△	△				◇	◇	◇		3202	253
	△	◇	△	◇	△	◇				△1	◇	◇		3031	291
	△	◇	△	◇	△	◇				△	◇	◇		3142	317
	△		△	◇	△	◇				◇	◇	◇		15401	175
		△		△	△	△				△1	◇	◇		1350	81
		◇	△	◇	△	◇				△1	◇	◇		3836	746
		◇	△	◇	△	◇				△	◇	◇		2748	208
		◇	△	◇	△	◇				◇	◇	△		2804	297
			△	◇	△	◇				◇	◇	◇	△	4177	1214
			△	◇	△	△				△		◇	△	10085	83
		◇	△	◇	△	△				◇1	◇	◇		2231	175
	◇1	◇	△	△	△	△				△		◇	△	3675	133
	△		△	△	△	△		◇		◇		◇		3296	329

## Tonight's mascot

Tonight's mascot is **Finlay James**, who celebrated his eighth birthday yesterday!

He will be celebrating as mascot tonight and is joined by his mum, dad and grandparents.

As well as football, Finlay enjoys rugby and swimming. His favourite player is Billy Clarke and he wants to grow up to be just like him!

**HAVE A GREAT NIGHT FINLAY!**





# Bruce Talbot

## THE FINAL WORD

### WHAT DO YOU THINK THE MOST POPULAR REQUEST IS TO THE CLUB?

Ticket enquiry? Where can I buy a shirt? When's the next home game? Well, we get plenty of those but nothing like the number of emails, letters, phone calls and even personal appearances at reception from players who want to wear the Crawley Town shirt. Agents, of course, are different although occasionally the club might receive a communication from an agent based overseas offering 'exciting, young players desperate to play for your wonderful club.' Most agents deal directly with the manager or Chief Executive. It is the way football works.

On average, the club gets about 20-30 requests for a trial every week and the number has steadily risen at the same rate as the club has progressed. Most come from abroad (the majority Europe) although we occasionally get an email from a player in England who fancies his chances of playing at League level on the basis that he's scored 30 goals for the Dog and Duck and who feels, at 28, that his best years are still in front of him.

It is the same at every club in the League and the higher up you are the more requests, and we are talking about thousands

of hopeful emails, inevitably accompanied by a grainy YouTube clip showing the player demonstrating the sort of skill if he'd shown earlier in his career on a regular basis would have earned him a contract somewhere a long time ago.

Occasionally you will read about a player who was picked up by a club on the basis of such a request but they are few and far between. Agents will also organise games involving players with some sort of pedigree at professional level that are usually attended by a host of scouts and managers. We had one here at The Checkatrade.com Stadium earlier in the year behind closed doors. I looked up the team-sheet, did a bit of research on the internet and discovered that the only player involved who has since got himself a contract was Bilel Moshni, who kept falling out with his managers at Southend but is now doing well in the Scottish First Division... with Rangers. The rest, as far as I can gather, have disappeared without trace.

In a typical week Director of Football Steve Coppell and Chief Scout Martin Hinshelwood will watch 10 games between them. Last week, for example, they took in matches in Conference South, League One, the FA Premier Under-21 League and the Championship. Martin even

popped in to Broadbridge Heath v Selsey on the way back from the England C international at Woking to see his 16-year-old grandson play for Selsey!

Both have extensive contacts and an encyclopaedic knowledge of players. Assistant Manager Taff Williams will also watch games and Richie Barker too. Last week the Gaffer watched Saturday's opponents Walsall against Peterborough and then stayed in the north to take in the FA Cup replay between York City and Bristol Rovers.

You will find very few more experienced 'football men' than Steve and Hinsh. Not only have they got a track record of spotting a player, their stature in the game means they pick up bits and pieces of gossip in the half-time tea room about players, even if they aren't actually on the club's radar at that time, that can sometimes prove very useful.

Players are recommended to the club all the time and acted upon accordingly but sadly there just aren't the personnel at a club like Crawley to look at every DVD or YouTube clip we receive or hop on a plane and watch them in the flesh.

**NOT THAT IT WILL EVER STOP THOSE EMAILS FROM COMING IN!**



Sky Bet are proud sponsor  
of The Football League

**£10**

Paid to  
**CRAWLEY TOWN**


when you make your first deposit\*


**HOME OF THE  
PRICE BOOST**

We'll offer enhanced  
odds on Football  
League matches

**PLUS** choose Sky Bet as your bookmaker and we'll  
give back a share of the revenue generated to  
**CRAWLEY TOWN**

Go to [www.skybet.com/crawley](http://www.skybet.com/crawley)  
to join up and earn your club money

 /skybet

 @skybet

18+ \*New customers only. Terms and conditions apply. Gamble responsibly. For more info, visit [www.gambleaware.co.uk](http://www.gambleaware.co.uk)  
or for confidential advice and support call the GamCare Helpline on 0808 8020 133.



# CRAWLEY TOWN

Manager: Richie Barker

Colours: Red and white

1. PAUL JONES (GK)
2. JAMES HURST
3. MAT SADLER
4. MARK CONNOLLY
5. KYLE McFADZEAN
6. CONNOR ESSAM
7. BILLY CLARKE
8. SERGIO TORRES
9. GARY ALEXANDER
10. ANDY DRURY
11. JOSH SIMPSON
12. JOE WALSH
14. JAMIE PROCTOR
15. DANNIE BULMAN
16. NICKY ADAMS
18. LUKE ROONEY
20. EMILE SINCLAIR
21. MIKE JONES
22. LOUIS JOHN
23. JONTE SMITH
24. ALEX MALINS
25. JONATHAN MADDISON (GK)



# SWINDON TOWN

MANAGER: Mark Cooper

COLOURS: Blue and black

1. WES FODERINGHAM (GK)
2. NATHAN THOMPSON
3. NATHAN BYRNE
4. MASSIMO LUONGO
5. GRANT HALL
6. TIJANE FREITAS REIS
7. RYAN HARLEY
8. RYAN MASON
9. NILE RANGER
11. ALEX PRITCHARD
12. DANY N'GUESSAN
14. JAY McEVELEY
15. YASER KASIM
16. MARK FRANCIS
17. CONNOR WALDON
18. ALEX FERGUSON
19. LOUIS THOMPSON
20. MILES STOREY
21. ALEX SMITH
22. DARREN WARD (CAPT)
23. JACK BARTHAM
24. LEE COX
25. TYRRELL BELFORD (GK)
26. AARON OAKLEY
27. HARRY AGOMBAR
29. RAPHAEL BRANCO
30. LEIGH BEDWELL (GK)
33. NICKY AJOSE
34. MOHAMMED ELGABAS
35. KAYDEN JACKSON
41. TROY ARCHIBALD HENVILLE

## MATCH OFFICIALS

### REFEREE:

Andy D'urso

### ASSISTANTS:

Ian Crouch and  
Constantine Hatzidakis

### FOURTH OFFICIAL:

Stuart Butler

## NEXT HOME GAME

Saturday, December 14  
Kick off 3pm  
Sky Bet League One  
PRESTON NORTH END



## SPONSORED BY:

The Integrated Print Solution  
[www.positiveimagesuk.com](http://www.positiveimagesuk.com)

